

UBE2I Rabbit mAb

Catalog No: #58870

Package Size: #58870-1 50ul #58870-2 100ul

Orders: order@signalwayantibody.comSupport: tech@signalwayantibody.com

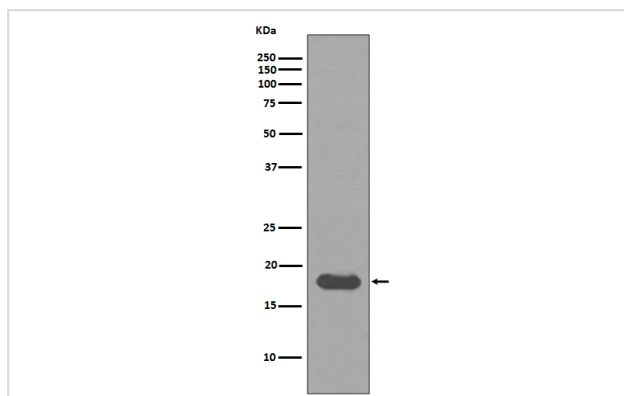
Description

Product Name	UBE2I Rabbit mAb
Host Species	Rabbit
Clonality	Monoclonal
Isotype	Rabbit IgG
Purification	Affinity-chromatography
Applications	WB IHC ICC/IF IP FC
Species Reactivity	Human Mouse Rat
Specificity	UBE2I Antibody detects endogenous levels of total UBE2I
Immunogen Description	A synthesized peptide derived from human UBE2I
Other Names	C358B7.1; P18; UBC9; UBE2I; SUMO1 protein ligase;
Accession No.	Uniprot:P63279
Uniprot	P63279
Formulation	Rabbit IgG in phosphate buffered saline , pH 7.4, 150mM NaCl, 0.02% sodium azide and 50% glycerol.
Storage	Store at +4°C short term. Store at -20°C long term. Avoid freeze / thaw cycle.

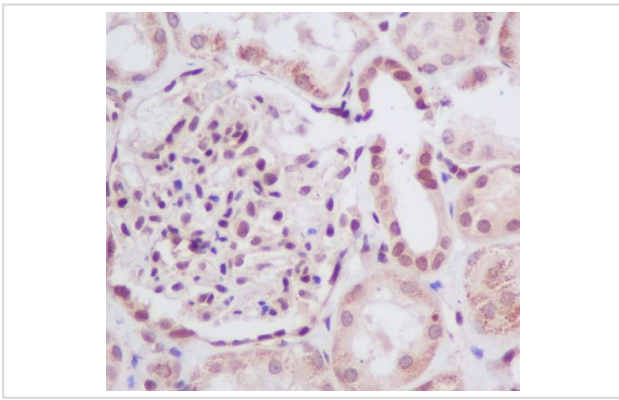
Application Details

WB 1:500~1:2000 IHC 1:50~1:200 ICC/IF 1:50~1:200 IP 1:50

Images



Western blot analysis of UBE2I expression in HeLa cell lysate.



Immunohistochemical analysis of paraffin-embedded human kidney, using UBE2I Antibody.

Product Description

The process of SUMO-1 conjugation is similar to that seen with ubiquitin and other forms of post-translational protein modification. Like ubiquitin, SUMO-1 is conjugated to its target protein by the coordinated action of ubiquitin conjugation enzymes E1, E2 and E3. Ubc9 (or ube2M) is a highly conserved, 158 amino acid protein that acts as a SUMO-1 conjugating enzyme. Ubc9 binds to target proteins through their SUMO-1-CS (consensus sequence) domains and interacts with SUMO via the structurally conserved amino-terminal domain.

Background

The process of SUMO-1 conjugation is similar to that seen with ubiquitin and other forms of post-translational protein modification. Like ubiquitin, SUMO-1 is conjugated to its target protein by the coordinated action of ubiquitin conjugation enzymes E1, E2 and E3. Ubc9 (or ube2M) is a highly conserved, 158 amino acid protein that acts as a SUMO-1 conjugating enzyme. Ubc9 binds to target proteins through their SUMO-1-CS (consensus sequence) domains and interacts with SUMO via the structurally conserved amino-terminal domain.

Note: This product is for in vitro research use only