

Apolipoprotein E Rabbit mAb

Catalog No: #58871

Package Size: #58871-1 50ul #58871-2 100ul

Orders: order@signalwayantibody.com

Support: tech@signalwayantibody.com

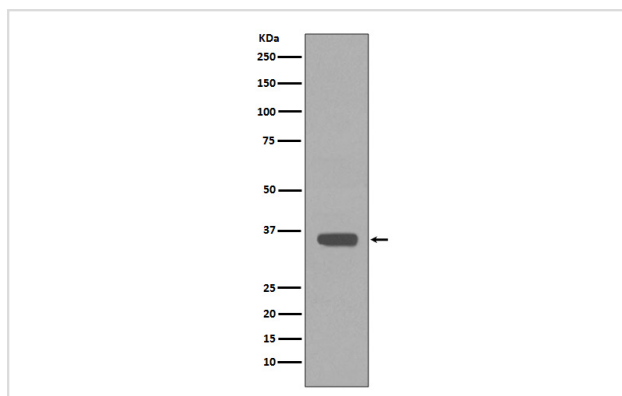
Description

Product Name	Apolipoprotein E Rabbit mAb
Host Species	Rabbit
Clonality	Monoclonal
Isotype	Rabbit IgG
Purification	Affinity-chromatography
Applications	WB IHC ICC/IF IP
Species Reactivity	Human Mouse
Specificity	Apolipoprotein E Antibody detects endogenous levels of total Apolipoprotein E
Immunogen Description	A synthesized peptide derived from human Apolipoprotein E
Other Names	Apo-E; Apolipoprotein E; APOE; LDLCQ5; AD2; LPG;
Accession No.	Uniprot:P02649
Uniprot	P02649
Formulation	Rabbit IgG in phosphate buffered saline , pH 7.4, 150mM NaCl, 0.02% sodium azide and 50% glycerol.
Storage	Store at +4°C short term. Store at -20°C long term. Avoid freeze / thaw cycle.

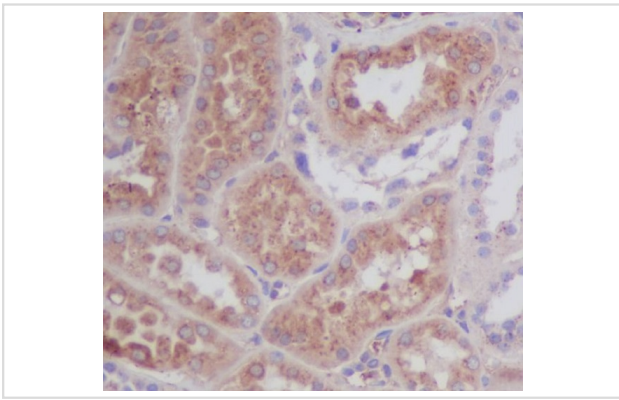
Application Details

WB 1:500~1:2000 IHC 1:50~1:200 ICC/IF 1:50~1:200 IP 1:50

Images



Western blot analysis of Apolipoprotein E expression in Human serum lysate.



Immunohistochemical analysis of paraffin-embedded human kidney, using Apolipoprotein E Antibody.

Product Description

Mediates the binding, internalization, and catabolism of lipoprotein particles. It can serve as a ligand for the LDL (apo B/E) receptor and for the specific apo-E receptor (chylomicron remnant) of hepatic tissues.

Background

Mediates the binding, internalization, and catabolism of lipoprotein particles. It can serve as a ligand for the LDL (apo B/E) receptor and for the specific apo-E receptor (chylomicron remnant) of hepatic tissues.

Note: This product is for in vitro research use only