

TPH1 Rabbit mAb

Catalog No: #58872

Package Size: #58872-1 50ul #58872-2 100ul

Orders: order@signalwayantibody.com

Support: tech@signalwayantibody.com

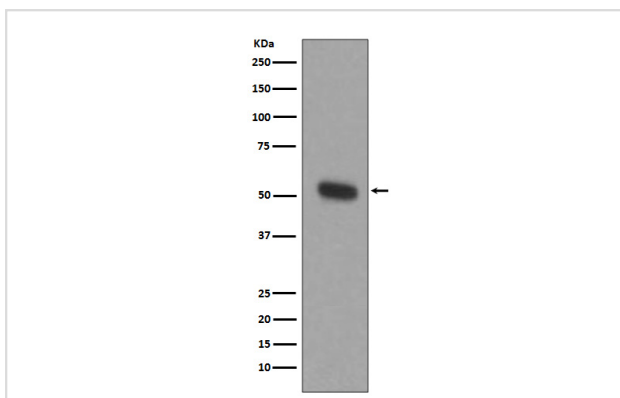
Description

Product Name	TPH1 Rabbit mAb
Host Species	Rabbit
Clonality	Monoclonal
Isotype	Rabbit IgG
Purification	Affinity-chromatography
Applications	WB IHC IP
Species Reactivity	Human Mouse Rat
Specificity	TPH1 Antibody detects endogenous levels of total TPH1
Immunogen Description	A synthesized peptide derived from human TPH1
Other Names	TPH1;MGC119994;TPRH;TRPH;Tryptophan 5-hydroxylase 1; Tryptophan Hydroxylase;
Accession No.	Uniprot:P17752
Uniprot	P17752
Formulation	Rabbit IgG in phosphate buffered saline , pH 7.4, 150mM NaCl, 0.02% sodium azide and 50% glycerol.
Storage	Store at +4°C short term. Store at -20°C long term. Avoid freeze / thaw cycle.

Application Details

WB 1:500~1:2000 IHC 1:50~1:200 IP 1:50

Images



Western blot analysis of TPH1 expression in THP-1 cell lysate.

Product Description

Tryptophan hydroxylase (TPH) is the rate-limiting enzyme in the biosynthesis of serotonin by converting tryptophan to 5-hydroxy-L-tryptophan. Two isoforms of TPH exist: TPH-1 is mainly expressed in the periphery, whereas the expression of TPH-2 is restricted to neuronal cells and the central nervous system. Most of the serotonin found throughout the body is synthesized by TPH-1 in enterochromaffin cells of the gastrointestinal tract. Targeted disruption of the tph1 gene results in low levels of circulating and tissue serotonin.

Background

Tryptophan hydroxylase (TPH) is the rate-limiting enzyme in the biosynthesis of serotonin by converting tryptophan to 5-hydroxy-L-tryptophan. Two isoforms of TPH exist: TPH-1 is mainly expressed in the periphery, whereas the expression of TPH-2 is restricted to neuronal cells and the central nervous system. Most of the serotonin found throughout the body is synthesized by TPH-1 in enterochromaffin cells of the gastrointestinal tract. Targeted disruption of the tph1 gene results in low levels of circulating and tissue serotonin.

Note: This product is for in vitro research use only