

Cytokeratin 14 Rabbit mAb

Catalog No: #58873

Package Size: #58873-1 50ul #58873-2 100ul

Orders: order@signalwayantibody.com

Support: tech@signalwayantibody.com

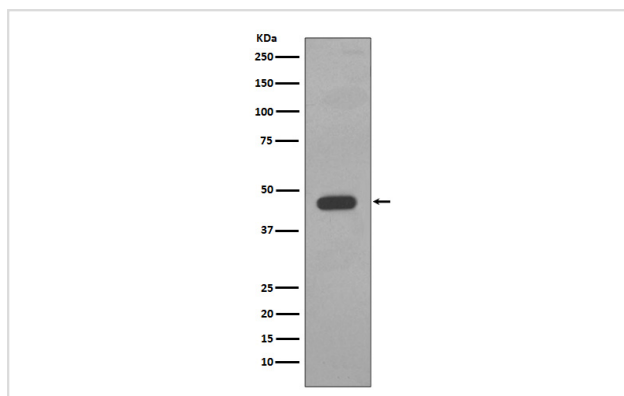
Description

Product Name	Cytokeratin 14 Rabbit mAb
Host Species	Rabbit
Clonality	Monoclonal
Isotype	Rabbit IgG
Purification	Affinity-chromatography
Applications	WB IHC ICC/IF IP FC
Species Reactivity	Human
Specificity	Cytokeratin 14 Antibody detects endogenous levels of total Cytokeratin 14
Immunogen Description	A synthesized peptide derived from human Cytokeratin 14
Other Names	Keratin type I cytoskeletal 14; Cytokeratin-14; CK-14; CK14;
Accession No.	Uniprot:P02533
Uniprot	P02533
Formulation	Rabbit IgG in phosphate buffered saline , pH 7.4, 150mM NaCl, 0.02% sodium azide and 50% glycerol.
Storage	Store at +4°C short term. Store at -20°C long term. Avoid freeze / thaw cycle.

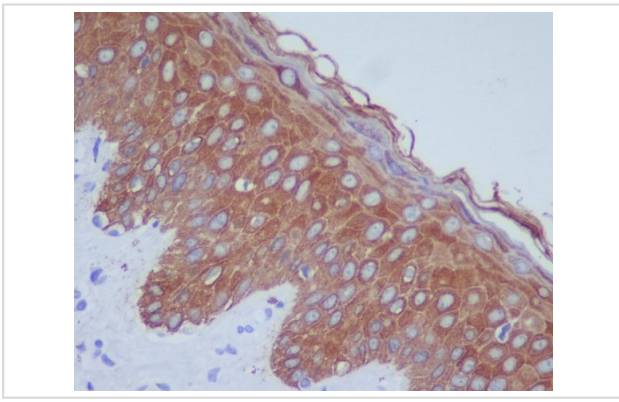
Application Details

WB 1:500~1:2000 IHC 1:50~1:200 ICC/IF 1:50~1:200 IP 1:50

Images



Western blot analysis of Cytokeratin 14 expression in A431 cell lysate.



Immunohistochemical analysis of paraffin-embedded human skin, using Cytokeratin 14 Antibody.

Product Description

The nonhelical tail domain is involved in promoting KRT5-KRT14 filaments to self-organize into large bundles and enhances the mechanical properties involved in resilience of keratin intermediate filaments in vitro.

Background

The nonhelical tail domain is involved in promoting KRT5-KRT14 filaments to self-organize into large bundles and enhances the mechanical properties involved in resilience of keratin intermediate filaments in vitro.

Note: This product is for in vitro research use only