

Progesterone Receptor Rabbit mAb

Catalog No: #58884

Package Size: #58884-1 50ul #58884-2 100ul

Orders: order@signalwayantibody.com

Support: tech@signalwayantibody.com

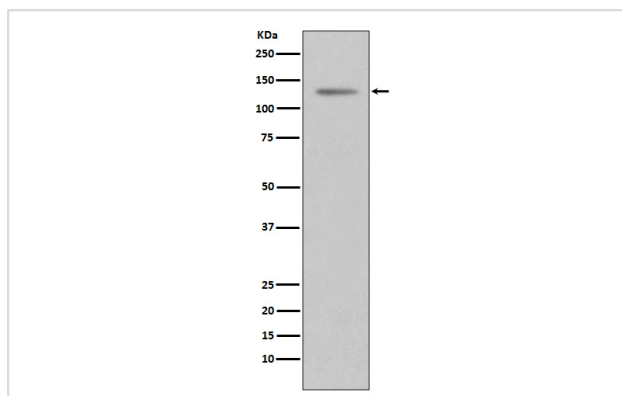
Description

Product Name	Progesterone Receptor Rabbit mAb
Host Species	Rabbit
Clonality	Monoclonal
Isotype	Rabbit IgG
Purification	Affinity-chromatography
Applications	WB IHC ICC/IF IP
Species Reactivity	Human
Specificity	Progesterone Receptor Antibody detects endogenous levels of Progesterone Receptor
Immunogen Description	A synthesized peptide derived from human Progesterone Receptor
Other Names	NR3C3; PGR; PRGR; Progesterone receptor;
Accession No.	Uniprot:P06401
Uniprot	P06401
Formulation	Rabbit IgG in phosphate buffered saline , pH 7.4, 150mM NaCl, 0.02% sodium azide and 50% glycerol.
Storage	Store at +4°C short term. Store at -20°C long term. Avoid freeze / thaw cycle.

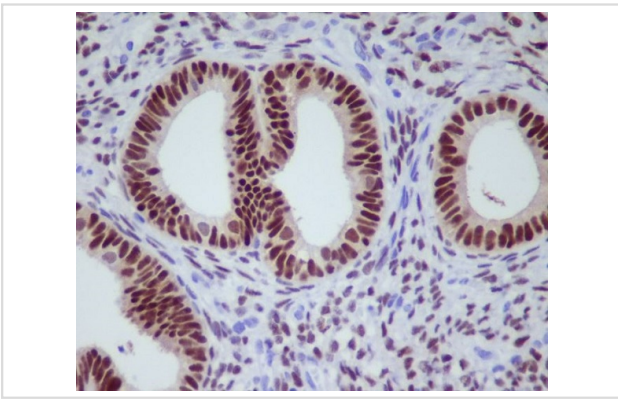
Application Details

WB 1:1000~1:2000 IHC 1:50~1:200 ICC/IF 1:50~1:200 IP 1:50

Images



Western blot analysis of Progesterone Receptor expression in T47 D cell lysate.



Immunohistochemical analysis of paraffin-embedded human uterus, using Progesterone Receptor Antibody.

Product Description

Progesterone plays a central role in the reproductive events associated with the establishment and maintenance of pregnancy. Progesterone receptor, a member of the steroid receptor superfamily, mediates the physiologic effects of progesterone.

Background

Progesterone plays a central role in the reproductive events associated with the establishment and maintenance of pregnancy. Progesterone receptor, a member of the steroid receptor superfamily, mediates the physiologic effects of progesterone.

Note: This product is for in vitro research use only