

Cytochrome C Rabbit mAb

Catalog No: #58912

Package Size: #58912-1 50ul #58912-2 100ul

Orders: order@signalwayantibody.com

Support: tech@signalwayantibody.com

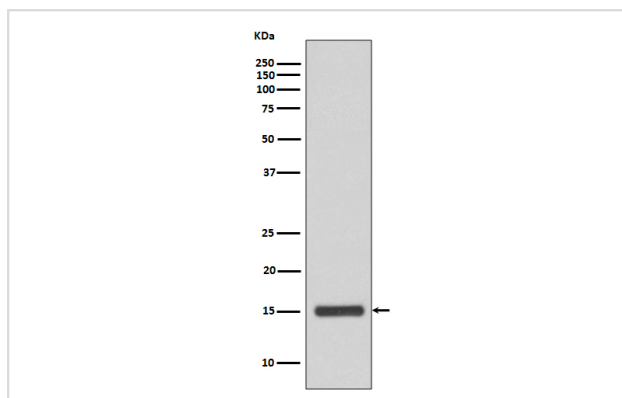
Description

Product Name	Cytochrome C Rabbit mAb
Host Species	Rabbit
Clonality	Monoclonal
Isotype	Rabbit IgG
Purification	Affinity-chromatography
Applications	WB IHC
Species Reactivity	Human Mouse Rat
Specificity	Cytochrome C Antibody detects endogenous levels of Cytochrome C
Immunogen Description	A synthesized peptide derived from human Cytochrome C
Other Names	CYC; CYCS; Cytochrome c; cytochrome c, somatic; HCS; THC4
Accession No.	Uniprot:P99999
Uniprot	P99999
Formulation	Rabbit IgG in phosphate buffered saline , pH 7.4, 150mM NaCl, 0.02% sodium azide and 50% glycerol.
Storage	Store at +4°C short term. Store at -20°C long term. Avoid freeze / thaw cycle.

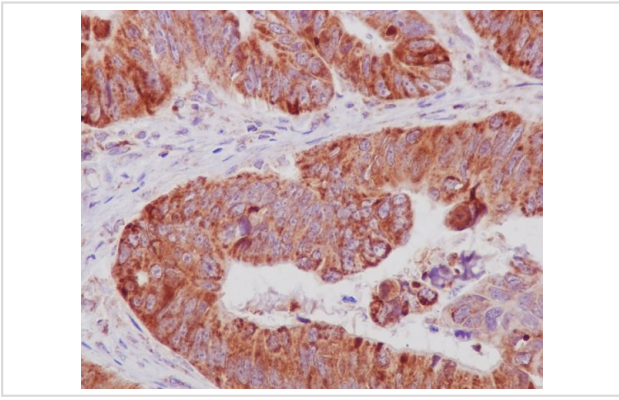
Application Details

WB 1:500~1:2000 IHC 1:50~1:200

Images



Western blot analysis of Cytochrome C expression in HeLa cell lysate.



Immunohistochemical analysis of paraffin-embedded human colonic cancer, using Cytochrome C Antibody.

Product Description

CYCS Electron carrier protein. The oxidized form of the cytochrome c heme group can accept an electron from the heme group of the cytochrome c1 subunit of cytochrome reductase. Cytochrome c then transfers this electron to the cytochrome oxidase complex, the final protein carrier in the mitochondrial electron-transport chain.

Background

CYCS Electron carrier protein. The oxidized form of the cytochrome c heme group can accept an electron from the heme group of the cytochrome c1 subunit of cytochrome reductase. Cytochrome c then transfers this electron to the cytochrome oxidase complex, the final protein carrier in the mitochondrial electron-transport chain.

Note: This product is for in vitro research use only