

GAP43 Rabbit mAb

Catalog No: #58917

Package Size: #58917-1 50ul #58917-2 100ul

Orders: order@signalwayantibody.com

Support: tech@signalwayantibody.com

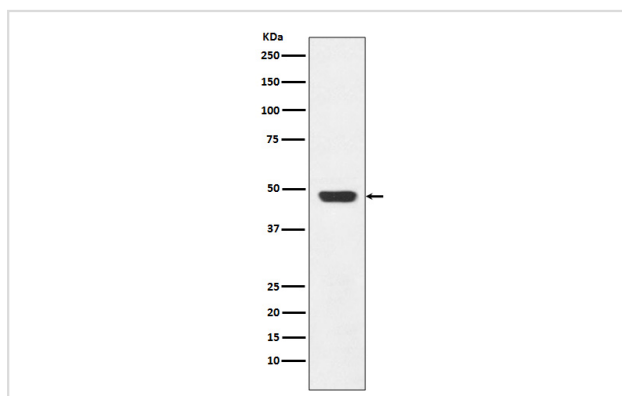
Description

Product Name	GAP43 Rabbit mAb
Host Species	Rabbit
Clonality	Monoclonal
Isotype	Rabbit IgG
Purification	Affinity-chromatography
Applications	WB IHC ICC/IF IP FC
Species Reactivity	Human Mouse Rat
Specificity	GAP43 Antibody detects endogenous levels of GAP43
Immunogen Description	A synthesized peptide derived from human GAP43
Other Names	GAP43, Axonal membrane protein GAP-43, B-50, Growth associated protein 43, Neural phosphoprotein B-50, Neuromodulin, PP46, GAP-43, Protein F1;
Accession No.	Uniprot:P17677
Uniprot	Store at +4°C short term. Store at -20°C long term. Avoid freeze / thaw cycle.
Calculated MW	48kDa
Formulation	Rabbit IgG in phosphate buffered saline , pH 7.4, 150mM NaCl, 0.02% sodium azide and 50% glycerol.
Storage	Store at +4°C short term. Store at -20°C long term. Avoid freeze / thaw cycle.

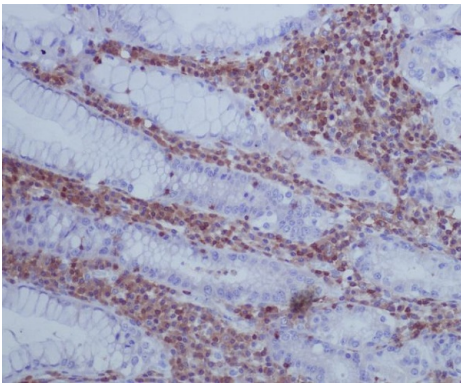
Application Details

WB 1:10000~1:50000 IHC 1:50~1:200 ICC/IF 1:50~1:200 IP 1:30 FC 1:20

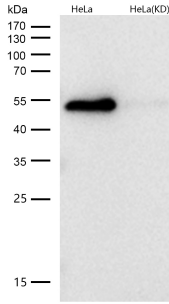
Images



Western blot analysis of GAP43 expression in SH-SY5Y cell lysate.



Immunohistochemical analysis of paraffin-embedded human stomach, using GAP43 Antibody.



All lanes use the Antibody at 1:2W dilution for 1 hour at room temperature.

Product Description

This protein is associated with nerve growth. It is a major component of the motile growth cones" that form the tips of elongating axons. Plays a role in axonal and dendritic filopodia induction., 1, 1, 1, 1, 0, 1, 1701055481, 0, 0, 0, 0, 0, 0, 1701055481, 0, -1, -1, 0, 0
323585, 57, 58918, JAM1 Rabbit mAb, 0, 10, JAM1-Rabbit-mAb, JAM1 Rabbit mAb, ., 0, 50ul, 249, 249, 0, 0, 0, 58, ABWAY, CY5635, CY5635, 0, 0, 0, Yes, Rabbit Monoclonal Antibody, "Seems to play a role in epithelial tight junction formation. Appears early in primordial forms of cell junctions and recruits PARD3. The association of the PARD6-PARD3 complex may prevent the interaction of PARD3 with JAM1, thereby preventing tight junction assembly (By similarity). Plays a role in regulating monocyte transmigration involved in integrity of epithelial barrier. Involved in platelet activation. In case of orthoreovirus infection, serves as receptor for the virus.

Background

This protein is associated with nerve growth. It is a major component of the motile growth cones" that form the tips of elongating axons. Plays a role in axonal and dendritic filopodia induction. ., P17677, Null, <http://www.uniprot.org/uniprot/P17677>, Null
323585, 323585, 58918, Null, JAM1 Rabbit mAb, Rabbit, Monoclonal, Null, Rabbit IgG, Affinity-chromatography, WB IHC, WB 1:500~1:2000 IHC 1:50~1:200 , Human Mouse Rat , JAM1 Antibody detects endogenous levels of JAM1, ., ., F11R; CD321; JAM; JAM-1; JAM-A; JAM1; JAMA; JCAM; KAT; PAM-1; Junction adhesion molecule 1; Uniprot: Q9Y624, ., Null, Null, 33kDa, Null, Null, Null, Null, Null, Null, Null, Null, A synthesized peptide derived from human JAM1, Null, Null, Null, Null, Null, Null, Null, Null, Null, Null, Null, Null, "Rabbit IgG in phosphate buffered saline , pH 7.4, 150mM NaCl, 0.02% sodium azide and 50% glycerol.

Note: This product is for in vitro research use only