

Rho A Rabbit mAb

Catalog No: #58922

Package Size: #58922-1 50ul #58922-2 100ul

Orders: order@signalwayantibody.com

Support: tech@signalwayantibody.com

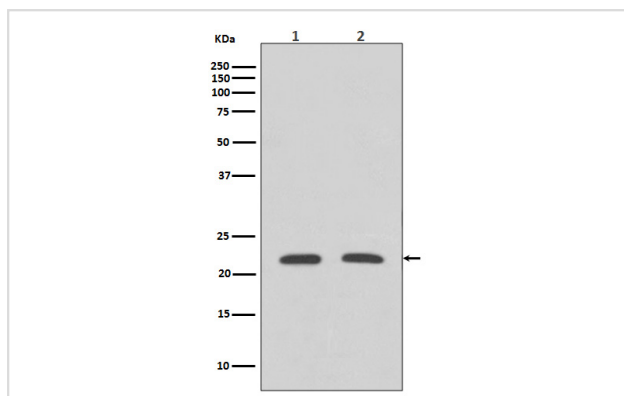
Description

Product Name	Rho A Rabbit mAb
Host Species	Rabbit
Clonality	Monoclonal
Isotype	Rabbit IgG
Purification	Affinity-chromatography
Applications	WB ICC/IF FC
Species Reactivity	Human Mouse Rat
Specificity	Rho A Antibody detects endogenous levels of Rho A
Immunogen Description	A synthesized peptide derived from human Rho A
Other Names	RHOA; ARH12; ARHA; RHO12; RHOH12;
Accession No.	Uniprot:P61586
Uniprot	P61586
Formulation	Rabbit IgG in phosphate buffered saline , pH 7.4, 150mM NaCl, 0.02% sodium azide and 50% glycerol.
Storage	Store at +4°C short term. Store at -20°C long term. Avoid freeze / thaw cycle.

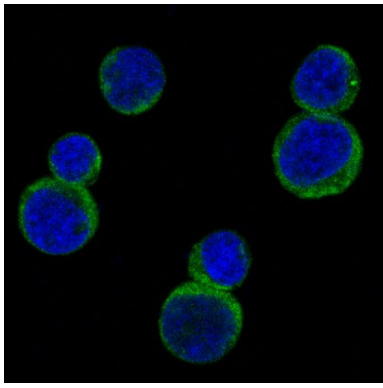
Application Details

WB 1:500~1:2000 ICC/IF 1:50~1:200 FC 1:50

Images



Western blot analysis of Rho A expression in (1) HeLa cell lysate; (2) NIH/3T3 cell lysate.



Immunofluorescent analysis of Jurkat cells, using Rho A Antibody.

Product Description

Rho A is a small G protein of the Rho family. Regulates a signal transduction pathway linking plasma membrane receptors to the assembly of focal adhesions and actin stress fibers.

Background

Rho A is a small G protein of the Rho family. Regulates a signal transduction pathway linking plasma membrane receptors to the assembly of focal adhesions and actin stress fibers.

Note: This product is for in vitro research use only