

Cortactin Rabbit mAb

Catalog No: #58928

Package Size: #58928-1 50ul #58928-2 100ul

Orders: order@signalwayantibody.com

Support: tech@signalwayantibody.com

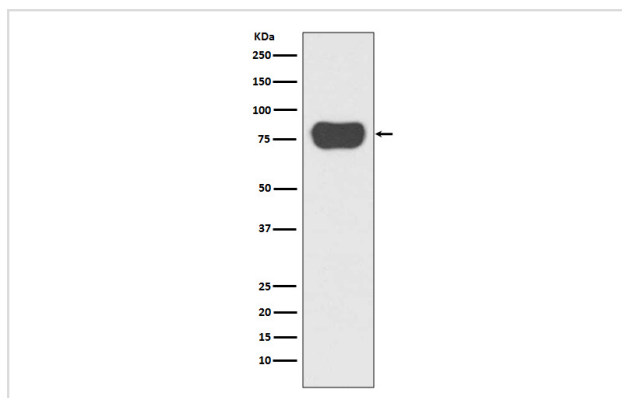
Description

Product Name	Cortactin Rabbit mAb
Host Species	Rabbit
Clonality	Monoclonal
Isotype	Rabbit IgG
Purification	Affinity-chromatography
Applications	WB IHC ICC/IF IP FC
Species Reactivity	Human Mouse Rat
Specificity	Cortactin Antibody detects endogenous levels of Cortactin
Immunogen Description	A synthesized peptide derived from human Cortactin
Other Names	Amplaxin; cortactin; CTTN; EMS1; Oncogene EMS1; Src substrate cortactin; SRC8;
Accession No.	Uniprot:Q14247
Uniprot	Q14247
Formulation	Rabbit IgG in phosphate buffered saline , pH 7.4, 150mM NaCl, 0.02% sodium azide and 50% glycerol.
Storage	Store at +4°C short term. Store at -20°C long term. Avoid freeze / thaw cycle.

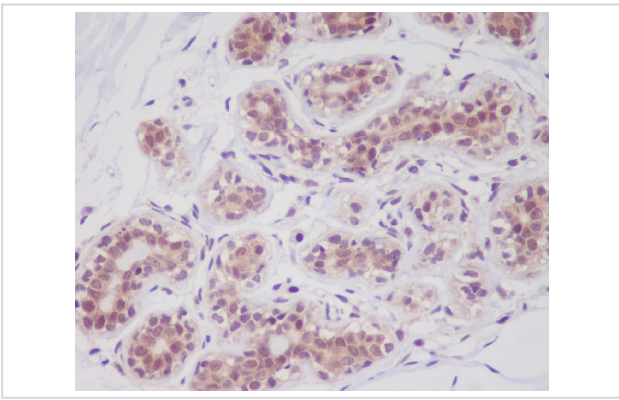
Application Details

WB 1:5000~1:10000 IHC 1:50~1:200 ICC/IF 1:50~1:200 IP 1:20 FC 1:20

Images



Western blot analysis of Cortactin expression in HeLa cell lysate.



Immunohistochemical analysis of paraffin-embedded human breast cancer, using Cortactin Antibody.

Product Description

Cortactin a cytoskeletal protein that that is involved in coordinating actin reorganization during cell movement. Localizes at the leading edge of lamellipodia during cell migration. Its amino-terminal acidic domain associates with the Arp2/3 and WASP complex at F-actin branches.

Background

Cortactin a cytoskeletal protein that that is involved in coordinating actin reorganization during cell movement. Localizes at the leading edge of lamellipodia during cell migration. Its amino-terminal acidic domain associates with the Arp2/3 and WASP complex at F-actin branches.

Note: This product is for in vitro research use only