

## Catenin alpha 1 Rabbit mAb

Catalog No: #58929

Package Size: #58929-1 50ul #58929-2 100ul

Orders: order@signalwayantibody.com

Support: tech@signalwayantibody.com

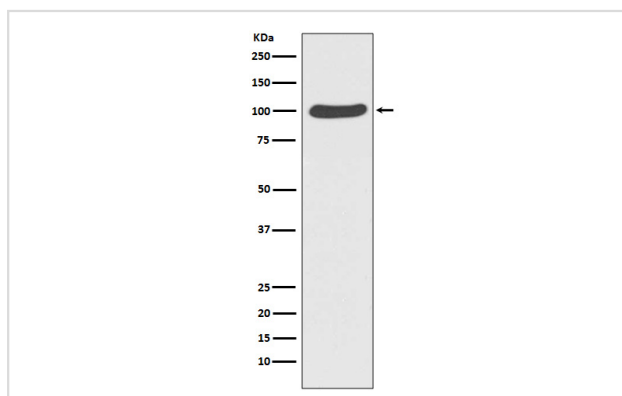
## Description

|                       |  |
|-----------------------|--|
| Product Name          | Catenin alpha 1 Rabbit mAb   |
| Host Species          | Rabbit   |
| Clonality             | Monoclonal   |
| Isotype               | Rabbit IgG   |
| Purification          | Affinity-chromatography  |
| Applications          | WB IHC ICC/IF IP FC  |
| Species Reactivity    | Human Mouse Rat  |
| Specificity           | Catenin alpha 1 Antibody detects endogenous levels of Catenin alpha 1  |
| Immunogen Description | A synthesized peptide derived from human Catenin alpha 1   |
| Other Names           | 102 kDa cadherin-associated protein; Alpha E-catenin; CATNA1; CTN1; Cadherin-associated protein; catenin alpha-1; Catenin alpha 1; |
| Accession No.         | Uniprot:P35221   |
| Uniprot               | P35221   |
| Calculated MW         | 100kDa   |
| Formulation           | Rabbit IgG in phosphate buffered saline , pH 7.4, 150mM NaCl, 0.02% sodium azide and 50% glycerol.                                 |
| Storage               | Store at +4°C short term. Store at -20°C long term. Avoid freeze / thaw cycle.   |

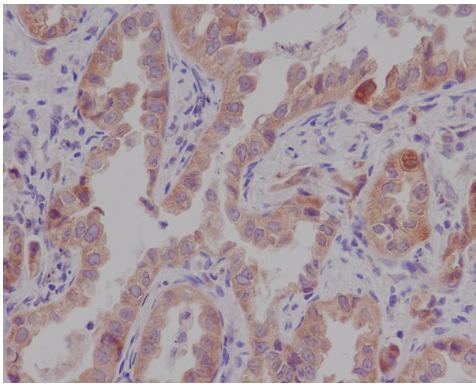
## Application Details

WB 1:10000~1:20000 IHC 1:50~1:200 ICC/IF 1:50~1:200 IP 1:50 FC 1:50

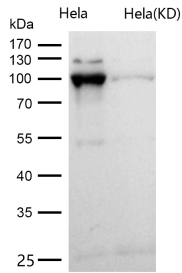
## Images



Western blot analysis of Catenin alpha 1 expression in HeLa cell lysate.



Immunohistochemical analysis of paraffin-embedded human lung cancer, using Catenin alpha 1 Antibody.



All lanes use the Antibody at 1:1W dilution for 1 hour at room temperature.

## Product Description

Adherens junctions are dynamic structures that form cell-cell contacts and are important in development, differentiation, tissue integrity, morphology and cell polarity. They are composed of the transmembrane proteins, cadherins, which bind cadherins on adjacent cells in a calcium-dependent manner.

## Background

Adherens junctions are dynamic structures that form cell-cell contacts and are important in development, differentiation, tissue integrity, morphology and cell polarity. They are composed of the transmembrane proteins, cadherins, which bind cadherins on adjacent cells in a calcium-dependent manner.

Note: This product is for in vitro research use only