

Ferritin Rabbit mAb

Catalog No: #58930

Package Size: #58930-1 50ul #58930-2 100ul

Orders: order@signalwayantibody.com

Support: tech@signalwayantibody.com

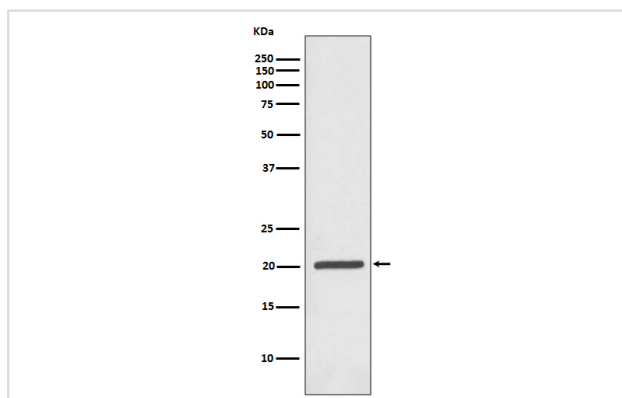
Description

Product Name	Ferritin Rabbit mAb
Host Species	Rabbit
Clonality	Monoclonal
Isotype	Rabbit IgG
Purification	Affinity-chromatography
Applications	WB ICC/IF
Species Reactivity	Human Mouse Rat
Specificity	Ferritin Antibody detects endogenous levels of Ferritin
Immunogen Description	A synthesized peptide derived from human Ferritin
Other Names	FTH1; Ferritin heavy chain; Ferritin heavy polypeptide 1; FHC; FTHL6; PIG15; PLIF; FTH;
Accession No.	Uniprot:P02794
Uniprot	P02794
Calculated MW	21kDa
Formulation	Rabbit IgG in phosphate buffered saline , pH 7.4, 150mM NaCl, 0.02% sodium azide and 50% glycerol.
Storage	Store at +4°C short term. Store at -20°C long term. Avoid freeze / thaw cycle.

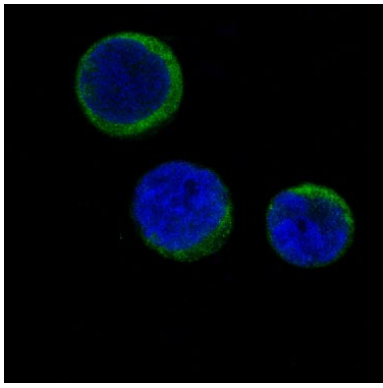
Application Details

WB 1:500~1:2000 ICC/IF 1:50~1:200

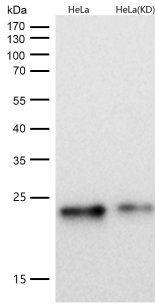
Images



Western blot analysis of Ferritin expression in Jurkat cell lysate.



Immunofluorescent analysis of Jurkat cells, using Ferritin Antibody.



All lanes use the Antibody at 1:1K dilution for 1 hour at room temperature.

Product Description

The assembled ferritin molecule, often referred to as a nanocage, can store up to 4,500 atoms of iron. It forms a holoenzyme of ~450 kDa, consisting of 24 subunits made up of two types of polypeptide chains: ferritin heavy chain and ferritin light chain, each having unique functions. Ferritin heavy chains catalyze the first step in iron storage, the oxidation of Fe(II), whereas ferritin light chains promote the nucleation of ferrihydrite, enabling storage of Fe(III).

Background

The assembled ferritin molecule, often referred to as a nanocage, can store up to 4,500 atoms of iron. It forms a holoenzyme of ~450 kDa, consisting of 24 subunits made up of two types of polypeptide chains: ferritin heavy chain and ferritin light chain, each having unique functions. Ferritin heavy chains catalyze the first step in iron storage, the oxidation of Fe(II), whereas ferritin light chains promote the nucleation of ferrihydrite, enabling storage of Fe(III).

Note: This product is for in vitro research use only