

Radixin Rabbit mAb

Catalog No: #58932



Package Size: #58932-1 50ul #58932-2 100ul

Orders: [order@signalwayantibody.com](mailto:order@signalwayantibody.com)  
Support: [tech@signalwayantibody.com](mailto:tech@signalwayantibody.com)

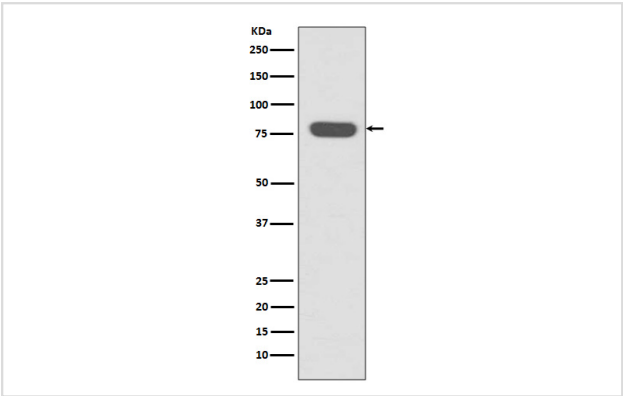
Description

Product Name	Radixin Rabbit mAb
Host Species	Rabbit
Clonality	Monoclonal
Isotype	Rabbit IgG
Purification	Affinity-chromatography
Applications	WB IHC ICC/IF IP FC
Species Reactivity	Human Mouse Rat
Specificity	Radixin Antibody detects endogenous levels of Radixin
Immunogen Description	A synthesized peptide derived from human Radixin
Other Names	RDX; Radixin; Protein roadkill; HIB; ESP10; DFNB24; RADI;
Accession No.	Uniprot:P35241
Uniprot	P35241
Formulation	Rabbit IgG in phosphate buffered saline , pH 7.4, 150mM NaCl, 0.02% sodium azide and 50% glycerol.
Storage	Store at +4°C short term. Store at -20°C long term. Avoid freeze / thaw cycle.

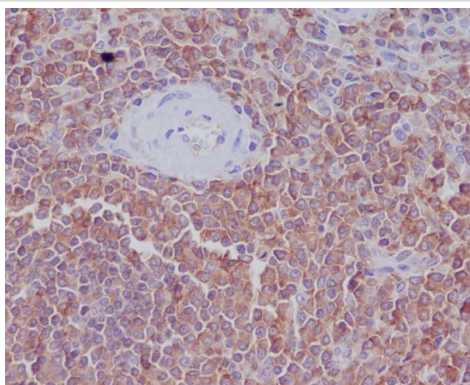
Application Details

WB 1:5000~1:10000 IHC 1:50~1:200 ICC/IF 1:50~1:200 IP 1:100 FC 1:100

Images



Western blot analysis of Radixin expression in HeLa cell lysate.



Immunohistochemical analysis of paraffin-embedded human spleen, using Radixin Antibody.

## Product Description

Probably plays a crucial role in the binding of the barbed end of actin filaments to the plasma membrane.

## Background

Probably plays a crucial role in the binding of the barbed end of actin filaments to the plasma membrane.

**Note:** This product is for in vitro research use only