

MFSD2B Antibody

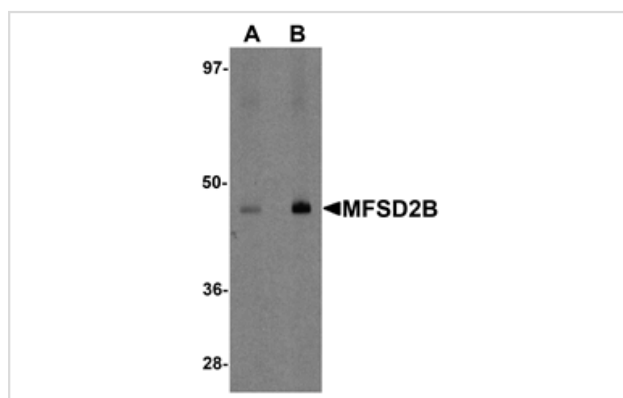
Catalog No: #25209

Orders: order@signalwayantibody.comSupport: tech@signalwayantibody.com

Description

Product Name	MFSD2B Antibody
Host Species	Rabbit
Clonality	Polyclonal
Purification	Affinity chromatography purified via peptide column
Applications	ELISA WB
Species Reactivity	Hu Rt
Immunogen Type	Peptide
Immunogen Description	Raised against a 15 amino acid peptide near the center of human MFSD2B.
Target Name	MFSD2B
Other Names	Major facilitator superfamily domain-containing protein 2B
Accession No.	Swiss-Prot:A6NFX1 Gene ID:388931
Uniprot	A6NFX1
GeneID	388931;
Concentration	1mg/ml
Formulation	Supplied in PBS containing 0.02% sodium azide.
Storage	Antibody can be stored at 4°C up to one year. Antibodies should not be exposed to prolonged high temperatures.

Images



Western blot analysis of MFSD2B in rat lung tissue lysate with MFSD2B antibody at (A) 1 and (B) 2 ug/mL.

Background

Multidrug transporters, such as MFSD2B, are membrane proteins that expel a wide spectrum of cytotoxic compounds from the cell and render cells resistant to multiple drugs. Major Facilitator Superfamily (MFS) members are capable of transporting various substrates such as sugars, polyols, drugs, neurotransmitters, amino acids, peptides, and inorganic anions, although most members are substrate-specific. MFSD2B is closely related to MFSD2A, which is expressed in many tissues and is highly induced in liver and brown adipose tissue (BAT) during fasting, playing a major role in the induction of MFSD2A expression during adaptive thermogenesis. Unlike MFSD2A, MFSD2B is expressed in few tissues and at relatively low levels, and is not induced during fasting, suggesting that MFSD2B may play other roles.

Note: This product is for in vitro research use only