

Cytokeratin 5 Rabbit mAb

Catalog No: #58934

Package Size: #58934-1 50ul #58934-2 100ul

Orders: order@signalwayantibody.com

Support: tech@signalwayantibody.com

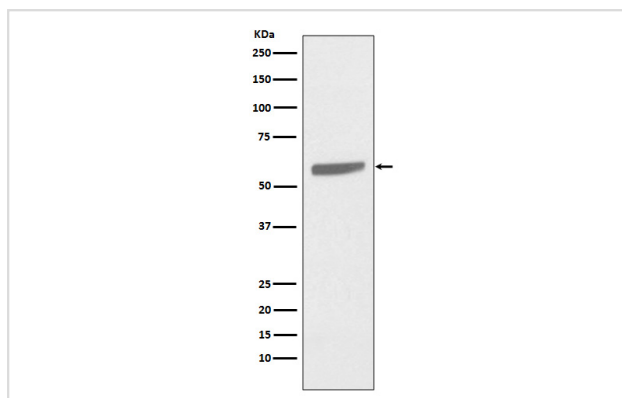
Description

Product Name	Cytokeratin 5 Rabbit mAb
Host Species	Rabbit
Clonality	Monoclonal
Isotype	Rabbit IgG
Purification	Affinity-chromatography
Applications	WB IHC ICC/IF
Species Reactivity	Human
Specificity	Cytokeratin 5 Antibody detects endogenous levels of Cytokeratin 5
Immunogen Description	A synthesized peptide derived from human Cytokeratin 5
Other Names	58 kDa cytokeratin; CK-5; CK5; Cytokeratin-5; DDD1; EBS2; K2C5; K5; keratin 5; Krt5;
Accession No.	Uniprot:P13647
Uniprot	P13647
Formulation	Rabbit IgG in phosphate buffered saline , pH 7.4, 150mM NaCl, 0.02% sodium azide and 50% glycerol.
Storage	Store at +4°C short term. Store at -20°C long term. Avoid freeze / thaw cycle.

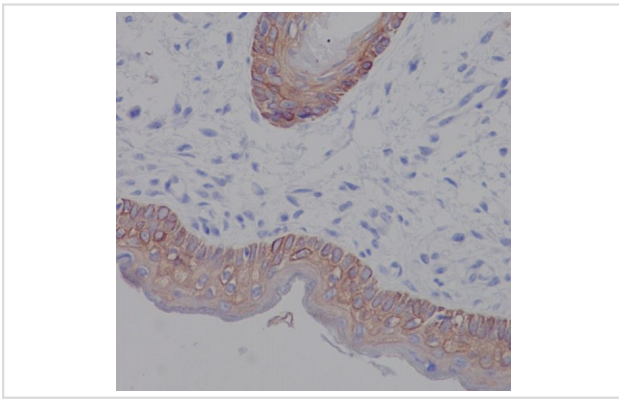
Application Details

WB 1:5000~1:10000 IHC 1:50~1:200 ICC/IF 1:50~1:200

Images



Western blot analysis of Cytokeratin 5 expression in A431 cell lysate.



Immunohistochemical analysis of paraffin-embedded human skin, using Cytokeratin 5 Antibody.

Product Description

The protein encoded by this gene is a member of the keratin gene family. The type II cytokeratins consist of basic or neutral proteins which are arranged in pairs of heterotypic keratin chains coexpressed during differentiation of simple and stratified epithelial tissues. This type II cytokeratin is specifically expressed in the basal layer of the epidermis with family member KRT14.

Background

The protein encoded by this gene is a member of the keratin gene family. The type II cytokeratins consist of basic or neutral proteins which are arranged in pairs of heterotypic keratin chains coexpressed during differentiation of simple and stratified epithelial tissues. This type II cytokeratin is specifically expressed in the basal layer of the epidermis with family member KRT14.

Note: This product is for in vitro research use only