

Integrin alpha E Rabbit mAb

Catalog No: #58936

Package Size: #58936-1 50ul #58936-2 100ul

Orders: order@signalwayantibody.com

Support: tech@signalwayantibody.com

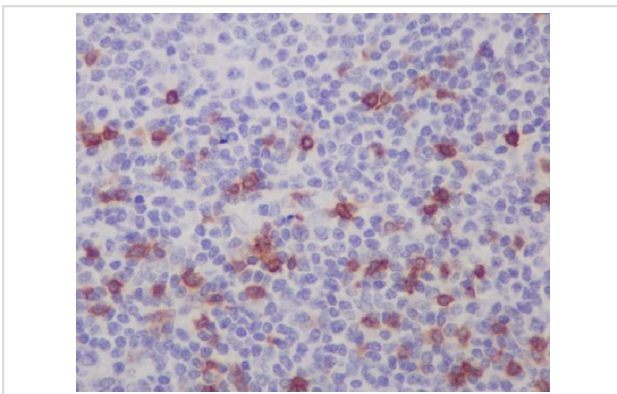
Description

Product Name	Integrin alpha E Rabbit mAb
Host Species	Rabbit
Clonality	Monoclonal
Isotype	Rabbit IgG
Purification	Affinity-chromatography
Applications	IHC
Species Reactivity	Human
Specificity	Integrin alpha E Antibody detects endogenous levels of Integrin alpha E
Immunogen Description	A synthesized peptide derived from human Integrin alpha E
Other Names	Integrin alpha-E; HML-1 antigen; Integrin alpha-IEL; Mucosal lymphocyte 1 antigen; CD103; ITGAE
Accession No.	Uniprot:P38570
Uniprot	P38570
Formulation	Rabbit IgG in phosphate buffered saline , pH 7.4, 150mM NaCl, 0.02% sodium azide and 50% glycerol.
Storage	Store at +4°C short term. Store at -20°C long term. Avoid freeze / thaw cycle.

Application Details

IHC 1:100~1:500

Images



Immunohistochemical analysis of paraffin-embedded human tonsil, using Integrin alpha E Antibody.

Product Description

Integrin alpha-E/beta-7 is a receptor for E-cadherin. It mediates adhesion of intra-epithelial T-lymphocytes to epithelial cell monolayers.

Background

Integrin alpha-E/beta-7 is a receptor for E-cadherin. It mediates adhesion of intra-epithelial T-lymphocytes to epithelial cell monolayers.

Note: This product is for in vitro research use only