

## ATG7 Rabbit mAb

Catalog No: #58939

Package Size: #58939-1 50ul #58939-2 100ul

Orders: order@signalwayantibody.com

Support: tech@signalwayantibody.com

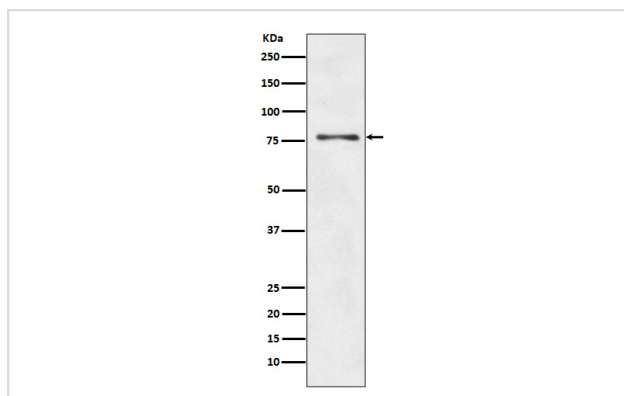
## Description

Product Name	ATG7 Rabbit mAb
Host Species	Rabbit
Clonality	Monoclonal
Isotype	Rabbit IgG
Purification	Affinity-chromatography
Applications	WB IHC ICC/IF IP FC
Species Reactivity	Human
Specificity	ATG7 Antibody detects endogenous levels of ATG7
Immunogen Description	A synthesized peptide derived from human ATG7
Other Names	ATG7; APG7-LIKE; APG7L; DKFZp434N0735; GSA7;
Accession No.	Uniprot:O95352
Uniprot	O95352
Formulation	Rabbit IgG in phosphate buffered saline , pH 7.4, 150mM NaCl, 0.02% sodium azide and 50% glycerol.
Storage	Store at +4°C short term. Store at -20°C long term. Avoid freeze / thaw cycle.

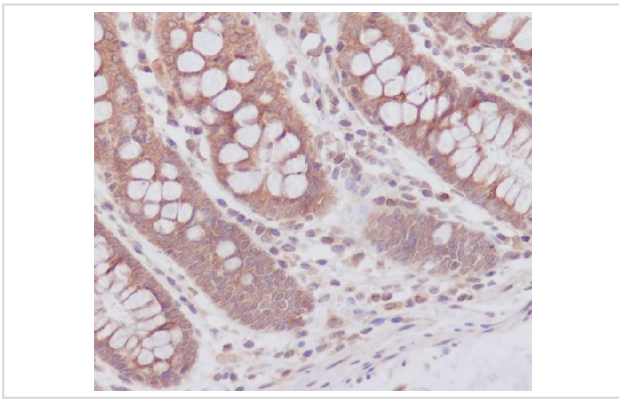
## Application Details

WB 1:10000~1:50000 IHC 1:50~1:200 ICC/IF 1:50~1:200 IP 1:20 FC 1:20

## Images



Western blot analysis of ATG7 expression in HepG2 cell lysate.



Immunohistochemical analysis of paraffin-embedded human colon, using ATG7 Antibody.

## Product Description

The molecular machinery of autophagy was largely discovered in yeast and referred to as autophagy-related (Atg) genes. Formation of the autophagosome involves a ubiquitin-like conjugation system in which Atg12 is covalently bound to Atg5 and targeted to autophagosome vesicles. This conjugation reaction is mediated by the ubiquitin E1-like enzyme Atg7 and the E2-like enzyme Atg10.

## Background

The molecular machinery of autophagy was largely discovered in yeast and referred to as autophagy-related (Atg) genes. Formation of the autophagosome involves a ubiquitin-like conjugation system in which Atg12 is covalently bound to Atg5 and targeted to autophagosome vesicles. This conjugation reaction is mediated by the ubiquitin E1-like enzyme Atg7 and the E2-like enzyme Atg10.

Note: This product is for in vitro research use only