

IKK alpha+beta Rabbit mAb

Catalog No: #58941

Package Size: #58941-1 50ul #58941-2 100ul

Orders: order@signalwayantibody.com

Support: tech@signalwayantibody.com

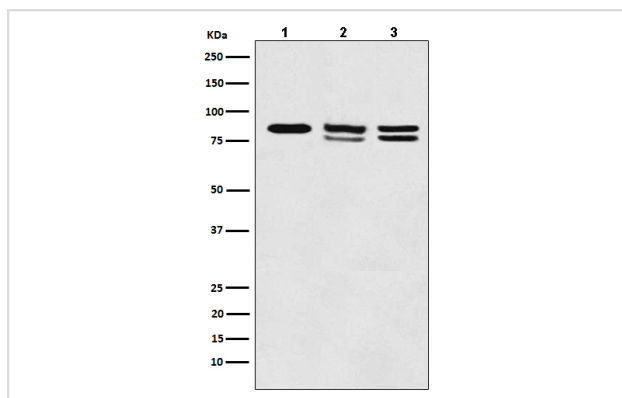
Description

Product Name	IKK alpha+beta Rabbit mAb
Host Species	Rabbit
Clonality	Monoclonal
Isotype	Rabbit IgG
Purification	Affinity-chromatography
Applications	WB ICC/IF IP
Species Reactivity	Human Mouse Rat
Specificity	IKK alpha+beta Antibody detects endogenous levels of IKK alpha+beta
Immunogen Description	A synthesized peptide derived from human IKK alpha+beta
Other Names	I-kappa-B kinase 2; I-kappa-B-kinase beta; IKKKB; IKK-B; IKK-beta; IKK2; IKKB;
Accession No.	Uniprot:O15111/O14920
Uniprot	O15111/O14920
Formulation	Rabbit IgG in phosphate buffered saline , pH 7.4, 150mM NaCl, 0.02% sodium azide and 50% glycerol.
Storage	Store at +4°C short term. Store at -20°C long term. Avoid freeze / thaw cycle.

Application Details

WB 1:500~1:1000 ICC/IF 1:50~1:100 IP 1:50

Images



Western blot analysis of IKK alpha+beta expression in (1) A431 cell lysate; (2) 293T cell lysate; (3) Mouse kidney lysate.

Product Description

IKK-beta a kinase of the IKK family. Phosphorylates inhibitors of NF-kappa-B thus leading to the dissociation of the inhibitor/NF-kappa-B complex and ultimately the degradation of the inhibitor. Preferentially found as a heterodimer with IKK-alpha but also as an homodimer.

Background

IKK-beta a kinase of the IKK family. Phosphorylates inhibitors of NF-kappa-B thus leading to the dissociation of the inhibitor/NF-kappa-B complex and ultimately the degradation of the inhibitor. Preferentially found as a heterodimer with IKK-alpha but also as an homodimer.

Note: This product is for in vitro research use only