

## IKB beta Rabbit mAb

Catalog No: #58948

Package Size: #58948-1 50ul #58948-2 100ul

Orders: order@signalwayantibody.com

Support: tech@signalwayantibody.com

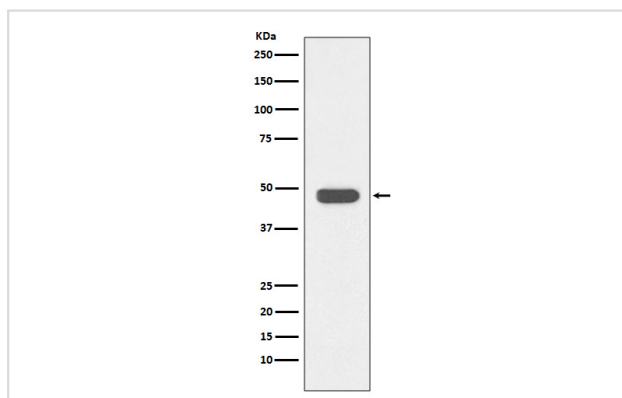
## Description

Product Name	IKB beta Rabbit mAb
Host Species	Rabbit
Clonality	Monoclonal
Isotype	Rabbit IgG
Purification	Affinity-chromatography
Applications	WB IHC ICC/IF IP
Species Reactivity	Human
Specificity	IKB beta Antibody detects endogenous levels of IKB beta
Immunogen Description	A synthesized peptide derived from human IKB beta
Other Names	I-kappa-B-beta; IκB-B; IκB-beta; IKBB; NF-kappa-BIB; NFKBIB; Thyroid receptor-interacting protein 9; TR-interacting protein 9; TRIP;
Accession No.	Uniprot:Q15653
Uniprot	Q15653
Formulation	Rabbit IgG in phosphate buffered saline , pH 7.4, 150mM NaCl, 0.02% sodium azide and 50% glycerol.
Storage	Store at +4°C short term. Store at -20°C long term. Avoid freeze / thaw cycle.

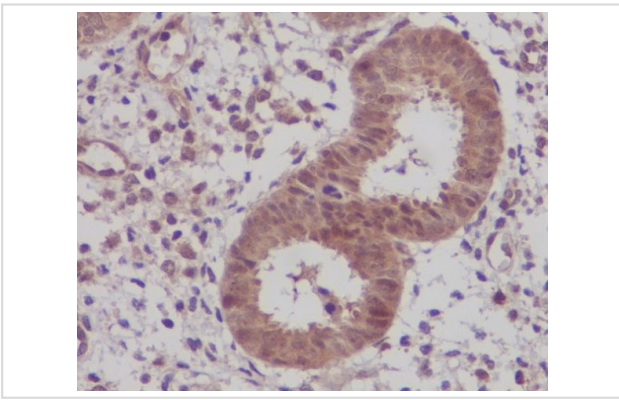
## Application Details

WB 1:500~1:2000 IHC 1:50~1:200 ICC/IF 1:50~1:200 IP 1:50

## Images



Western blot analysis of IKB beta expression in Jurkat cell lysate.



Immunohistochemical analysis of paraffin-embedded human uterus, using IKB beta Antibody.

## Product Description

KB-beta a protein of the NF-kappa-B inhibitor family. Inhibits NF-kappa-B by complexing with and trapping it in the cytoplasm. However, the unphosphorylated form resynthesized after cell stimulation is able to bind NF-kappa-B allowing its transport to the nucleus and protecting it to further IKBA- dependent inactivation.

## Background

KB-beta a protein of the NF-kappa-B inhibitor family. Inhibits NF-kappa-B by complexing with and trapping it in the cytoplasm. However, the unphosphorylated form resynthesized after cell stimulation is able to bind NF-kappa-B allowing its transport to the nucleus and protecting it to further IKBA- dependent inactivation.

Note: This product is for in vitro research use only