

## GARS Rabbit mAb

Catalog No: #58950

Package Size: #58950-1 50ul #58950-2 100ul

Orders: [order@signalwayantibody.com](mailto:order@signalwayantibody.com)Support: [tech@signalwayantibody.com](mailto:tech@signalwayantibody.com)

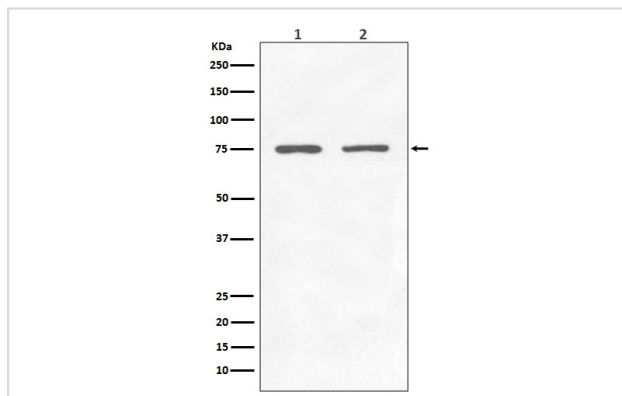
## Description

Product Name	GARS Rabbit mAb
Host Species	Rabbit
Clonality	Monoclonal
Isotype	Rabbit IgG
Purification	Affinity-chromatography
Applications	WB IHC
Species Reactivity	Human Mouse Rat
Specificity	GARS Antibody detects endogenous levels of GARS
Immunogen Description	A synthesized peptide derived from human GARS
Other Names	HMN5; CMT2D; DSMAV; GlyRS; SMAD1;
Accession No.	Uniprot:P41250
Uniprot	P41250
Calculated MW	75kDa
Formulation	Rabbit IgG in phosphate buffered saline , pH 7.4, 150mM NaCl, 0.02% sodium azide and 50% glycerol.
Storage	Store at +4°C short term. Store at -20°C long term. Avoid freeze / thaw cycle.

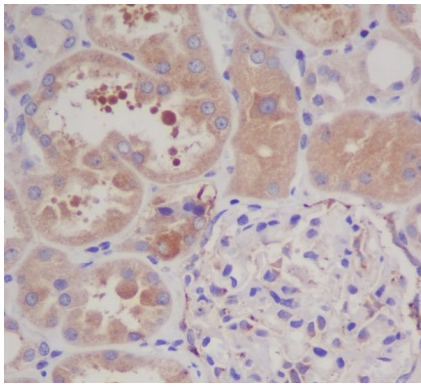
## Application Details

WB 1:1000~1:2000 IHC 1:50~1:200

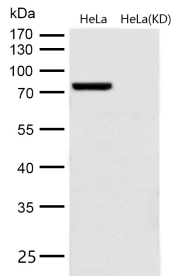
## Images



Western blot analysis of GARS expression in (1) Jurkat cell lysate; (2) 293T cell lysate.



Immunohistochemical analysis of paraffin-embedded human kidney, using GARS Antibody.



All lanes use the Antibody at 1:1K dilution for 1 hour at room temperature.

## Product Description

This gene encodes glycyl-tRNA synthetase, one of the aminoacyl-tRNA synthetases that charge tRNAs with their cognate amino acids. The encoded enzyme is an ( $\alpha$ )<sub>2</sub> dimer which belongs to the class II family of tRNA synthetases. It has been shown to be a target of autoantibodies in the human autoimmune diseases, polymyositis or dermatomyositis.

## Background

This gene encodes glycyl-tRNA synthetase, one of the aminoacyl-tRNA synthetases that charge tRNAs with their cognate amino acids. The encoded enzyme is an ( $\alpha$ )<sub>2</sub> dimer which belongs to the class II family of tRNA synthetases. It has been shown to be a target of autoantibodies in the human autoimmune diseases, polymyositis or dermatomyositis.

Note: This product is for in vitro research use only