

## RPS20 Rabbit mAb

Catalog No: #58957

Package Size: #58957-1 50ul #58957-2 100ul

Orders: order@signalwayantibody.com

Support: tech@signalwayantibody.com

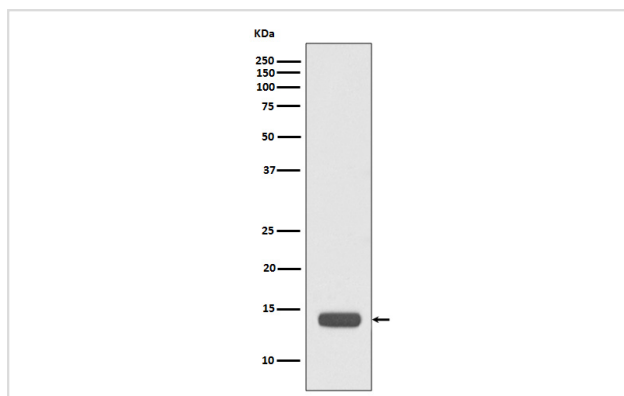
## Description

Product Name	RPS20 Rabbit mAb
Host Species	Rabbit
Clonality	Monoclonal
Isotype	Rabbit IgG
Purification	Affinity-chromatography
Applications	WB IHC ICC/IF
Species Reactivity	Human Mouse Rat
Specificity	RPS20 Antibody detects endogenous levels of RPS20
Immunogen Description	A synthesized peptide derived from human RPS20
Other Names	40S ribosomal protein S20; RS20; Ribosomal protein S20; RPS 20;
Accession No.	Uniprot:P60866
Uniprot	P60866
Formulation	Rabbit IgG in phosphate buffered saline , pH 7.4, 150mM NaCl, 0.02% sodium azide and 50% glycerol.
Storage	Store at +4°C short term. Store at -20°C long term. Avoid freeze / thaw cycle.

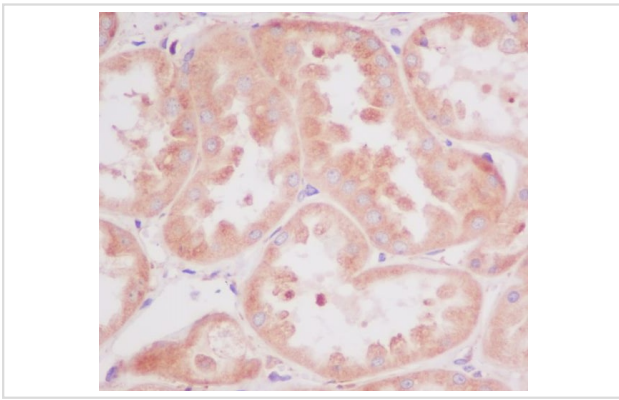
## Application Details

WB 1:1000~1:2000 IHC 1:50~1:200 ICC/IF 1:50~1:200

## Images



Western blot analysis of RPS20 expression in HeLa cell lysate.



Immunohistochemical analysis of paraffin-embedded human kidney, using RPS20 Antibody.

## Product Description

RPS20 is a ribosomal protein that is a component of the 40S subunit. Ribosomes, the organelles that catalyze protein synthesis, consist of a small 40S subunit and a large 60S subunit. Together these subunits are composed of 4 RNA species and approximately 80 structurally distinct proteins. RPS20 belongs to the S10P family of ribosomal proteins and is located in the cytoplasm.

## Background

RPS20 is a ribosomal protein that is a component of the 40S subunit. Ribosomes, the organelles that catalyze protein synthesis, consist of a small 40S subunit and a large 60S subunit. Together these subunits are composed of 4 RNA species and approximately 80 structurally distinct proteins. RPS20 belongs to the S10P family of ribosomal proteins and is located in the cytoplasm.

Note: This product is for in vitro research use only