

## TMS1 Rabbit mAb

Catalog No: #58960

Package Size: #58960-1 50ul #58960-2 100ul

Orders: order@signalwayantibody.com

Support: tech@signalwayantibody.com

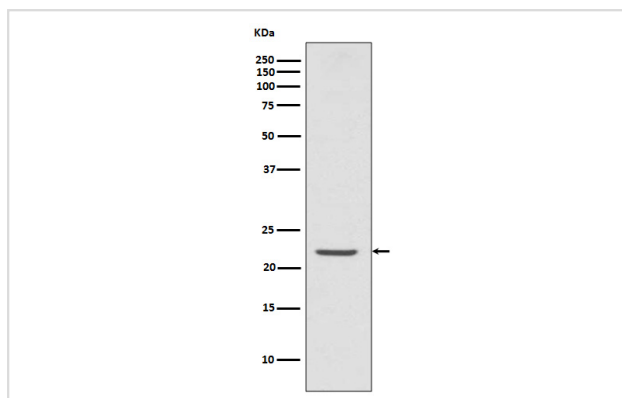
## Description

Product Name	TMS1 Rabbit mAb
Host Species	Rabbit
Clonality	Monoclonal
Isotype	Rabbit IgG
Purification	Affinity-chromatography
Applications	WB ICC/IF FC
Species Reactivity	Human
Specificity	TMS1 Antibody detects endogenous levels of TMS1
Immunogen Description	A synthesized peptide derived from human TMS1
Other Names	PYCARD; ASC; CARD5; TMS; TMS-1; TMS1;
Accession No.	Uniprot:Q9ULZ3
Uniprot	Q9ULZ3
Formulation	Rabbit IgG in phosphate buffered saline , pH 7.4, 150mM NaCl, 0.02% sodium azide and 50% glycerol.
Storage	Store at +4°C short term. Store at -20°C long term. Avoid freeze / thaw cycle.

## Application Details

WB 1:500~1:2000 ICC/IF 1:50~1:200 FC 150

## Images



Western blot analysis of TMS1 expression in U937 cell lysate.

## Product Description

TMS1 (target of methylation-induced silencing)/ASC (apoptosis-associated speck-like protein containing a CARD), also referred to as PYCARD and CARD5, is a 22-kDa pro-apoptotic protein containing an N-terminal pyrin domain (PYD) and a C-terminal caspase recruitment domain (CARD).

## Background

---

TMS1 (target of methylation-induced silencing)/ASC (apoptosis-associated speck-like protein containing a CARD), also referred to as PYCARD and CARD5, is a 22-kDa pro-apoptotic protein containing an N-terminal pyrin domain (PYD) and a C-terminal caspase recruitment domain (CARD).

---

Note: This product is for in vitro research use only