

Annexin A10 Rabbit mAb

Catalog No: #58964

Package Size: #58964-1 50ul #58964-2 100ul

Orders: order@signalwayantibody.com

Support: tech@signalwayantibody.com

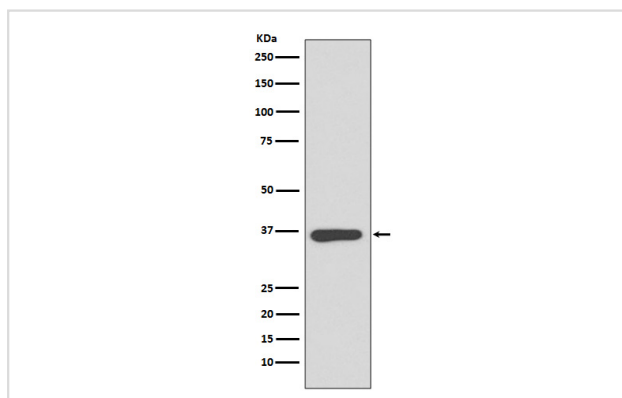
Description

Product Name	Annexin A10 Rabbit mAb
Host Species	Rabbit
Clonality	Monoclonal
Isotype	Rabbit IgG
Purification	Affinity-chromatography
Applications	WB
Species Reactivity	Human Mouse Rat
Specificity	Annexin A10 Antibody detects endogenous levels of Annexin A10
Immunogen Description	A synthesized peptide derived from human Annexin A10
Other Names	annexin 14; annexin A10; annexin-14; ANX10; ANX14;
Accession No.	Uniprot:Q9UJ72
Uniprot	Q9UJ72
Calculated MW	37kDa
Formulation	Rabbit IgG in phosphate buffered saline , pH 7.4, 150mM NaCl, 0.02% sodium azide and 50% glycerol.
Storage	Store at +4°C short term. Store at -20°C long term. Avoid freeze / thaw cycle.

Application Details

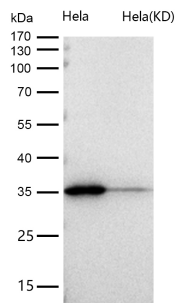
WB 1:500~1:2000

Images



Western blot analysis of Annexin A10 expression in HeLa cell lysate.

All lanes use the Antibody at 1:1K dilution for 1 hour at room temperature.



Product Description

Belongs to the annexin family. Contains 4 annexin repeats.

Background

Belongs to the annexin family. Contains 4 annexin repeats.

Note: This product is for in vitro research use only