

## WASF2 Rabbit mAb

Catalog No: #58965

Package Size: #58965-1 50ul #58965-2 100ul

Orders: [order@signalwayantibody.com](mailto:order@signalwayantibody.com)Support: [tech@signalwayantibody.com](mailto:tech@signalwayantibody.com)

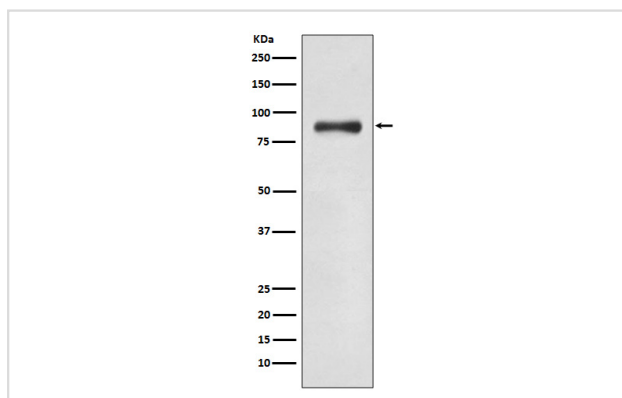
## Description

Product Name	WASF2 Rabbit mAb
Host Species	Rabbit
Clonality	Monoclonal
Isotype	Rabbit IgG
Purification	Affinity-chromatography
Applications	WB IHC
Species Reactivity	Human Mouse Rat
Specificity	WASF2 Antibody detects endogenous levels of WASF2
Immunogen Description	A synthesized peptide derived from human WASF2
Other Names	Wiskott-Aldrich syndrome protein family member 2/WASP family protein member 2; Protein WAVE-2; Verprolin homology domain-containing protein 2; WASF2;
Accession No.	Uniprot:Q9Y6W5
Uniprot	Q9Y6W5
Formulation	Rabbit IgG in phosphate buffered saline , pH 7.4, 150mM NaCl, 0.02% sodium azide and 50% glycerol.
Storage	Store at +4°C short term. Store at -20°C long term. Avoid freeze / thaw cycle.

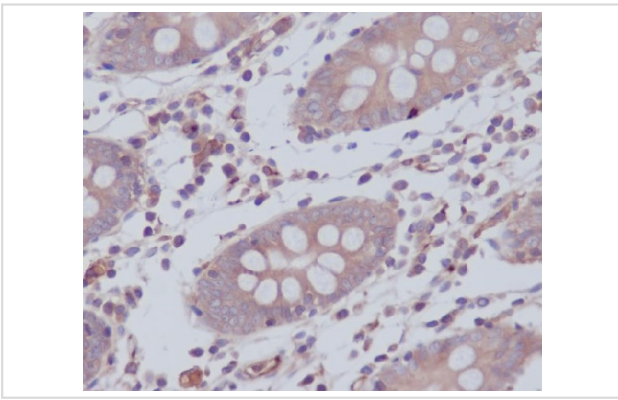
## Application Details

WB 1:500~1:2000 IHC 1:50~1:200

## Images



Western blot analysis of WASF2 expression in K562 cell lysate.



Immunohistochemical analysis of paraffin-embedded human colon, using WASF2 Antibody.

## Product Description

Wiskott-Aldrich syndrome proteins (WASPs) mediate actin dynamics by activating the Arp2/3 actin nucleation complex in response to activated Rho family GTPases. In mammals, five WASP family members have been described. Hematopoietic WASP and ubiquitously expressed N-WASP are autoinhibited in unstimulated cells.

## Background

Wiskott-Aldrich syndrome proteins (WASPs) mediate actin dynamics by activating the Arp2/3 actin nucleation complex in response to activated Rho family GTPases. In mammals, five WASP family members have been described. Hematopoietic WASP and ubiquitously expressed N-WASP are autoinhibited in unstimulated cells.

Note: This product is for in vitro research use only