

NSD3 Rabbit mAb

Catalog No: #58966

Package Size: #58966-1 50ul #58966-2 100ul

Orders: order@signalwayantibody.com

Support: tech@signalwayantibody.com

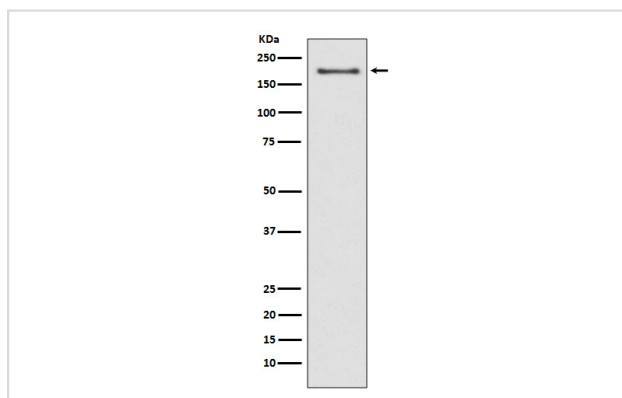
Description

Product Name	NSD3 Rabbit mAb
Host Species	Rabbit
Clonality	Monoclonal
Isotype	Rabbit IgG
Purification	Affinity-chromatography
Applications	WB FC
Species Reactivity	Human Mouse Rat
Specificity	NSD3 Antibody detects endogenous levels of NSD3
Immunogen Description	A synthesized peptide derived from human NSD3
Other Names	Wolf Hirschhorn syndrome candidate 1 like 1; WHSC1L1; NSD3; pp14328; Histone-lysine N-methyltransferase NSD3; Protein whistle;
Accession No.	Uniprot:Q9BZ95
Uniprot	Q9BZ95
Formulation	Rabbit IgG in phosphate buffered saline , pH 7.4, 150mM NaCl, 0.02% sodium azide and 50% glycerol.
Storage	Store at +4°C short term. Store at -20°C long term. Avoid freeze / thaw cycle.

Application Details

WB 1:1000~1:5000 FC 1:30

Images



Western blot analysis of NSD3 expression in MCF-7 cell lysate.

Product Description

This gene is related to the Wolf-Hirschhorn syndrome candidate-1 gene and encodes a protein with PWWP (proline-tryptophan-tryptophan-proline) domains. The function of the protein has not been determined. Two alternatively spliced variants have been described.

Background

This gene is related to the Wolf-Hirschhorn syndrome candidate-1 gene and encodes a protein with PWWP (proline-tryptophan-tryptophan-proline) domains. The function of the protein has not been determined. Two alternatively spliced variants have been described.

Note: This product is for in vitro research use only