

KCNA1 Rabbit mAb

Catalog No: #58967

Package Size: #58967-1 50ul #58967-2 100ul

Orders: order@signalwayantibody.com

Support: tech@signalwayantibody.com

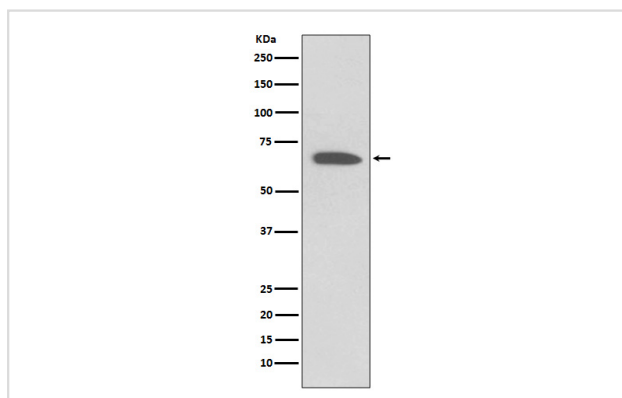
Description

Product Name	KCNA1 Rabbit mAb
Host Species	Rabbit
Clonality	Monoclonal
Isotype	Rabbit IgG
Purification	Affinity-chromatography
Applications	WB IP
Species Reactivity	Human
Specificity	KCNA1 Antibody detects endogenous levels of KCNA1
Immunogen Description	A synthesized peptide derived from human KCNA1
Other Names	HBK1; HUK1; EA1; MK1; AEMK; MBK1; RBK1; KCNA1; potassium channel Kv1.1; potassium voltage-gated channel subfamily A member 1;
Accession No.	Uniprot:Q09470
Uniprot	Q09470
Formulation	Rabbit IgG in phosphate buffered saline , pH 7.4, 150mM NaCl, 0.02% sodium azide and 50% glycerol.
Storage	Store at +4°C short term. Store at -20°C long term. Avoid freeze / thaw cycle.

Application Details

WB 1:5000~1:10000 IP 1:10

Images



Western blot analysis of KCNA1 expression in Human fetal brain lysate.

Product Description

This gene encodes a voltage-gated delayed potassium channel that is phylogenetically related to the *Drosophila* Shaker channel. The encoded protein has six putative transmembrane segments (S1-S6), and the loop between S5 and S6 forms the pore and contains the conserved selectivity filter motif (GYGD). The functional channel is a homotetramer.

Background

This gene encodes a voltage-gated delayed potassium channel that is phylogenetically related to the *Drosophila* Shaker channel. The encoded protein has six putative transmembrane segments (S1-S6), and the loop between S5 and S6 forms the pore and contains the conserved selectivity filter motif (GYGD). The functional channel is a homotetramer.

Note: This product is for in vitro research use only