

CPT2 Rabbit mAb

Catalog No: #58970



Package Size: #58970-1 50ul #58970-2 100ul

Orders: order@signalwayantibody.com
Support: tech@signalwayantibody.com

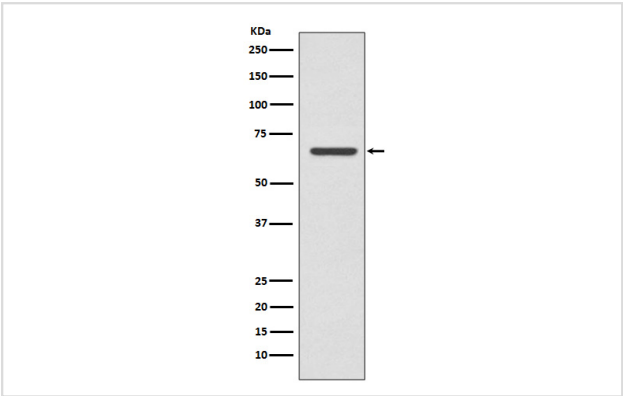
Description

Product Name	CPT2 Rabbit mAb
Host Species	Rabbit
Clonality	Monoclonal
Isotype	Rabbit IgG
Purification	Affinity-chromatography
Applications	WB IHC ICC/IF
Species Reactivity	Human Mouse Rat
Specificity	CPT2 Antibody detects endogenous levels of CPT2
Immunogen Description	A synthesized peptide derived from human CPT2
Other Names	CPT1; CPT2; IIAE4; CPTASE;
Accession No.	Uniprot:P23786
Uniprot	P23786
Formulation	Rabbit IgG in phosphate buffered saline , pH 7.4, 150mM NaCl, 0.02% sodium azide and 50% glycerol.
Storage	Store at +4°C short term. Store at -20°C long term. Avoid freeze / thaw cycle.

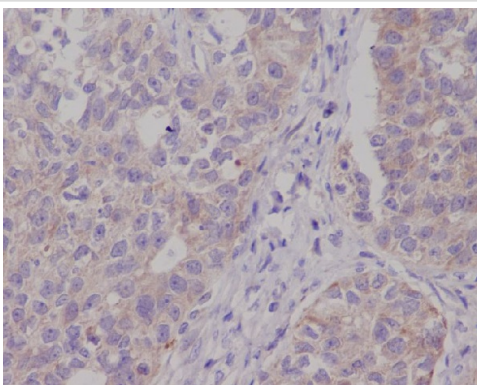
Application Details

WB 1:500~1:2000 IHC 1:50~1:200 ICC/IF 1:50~1:200

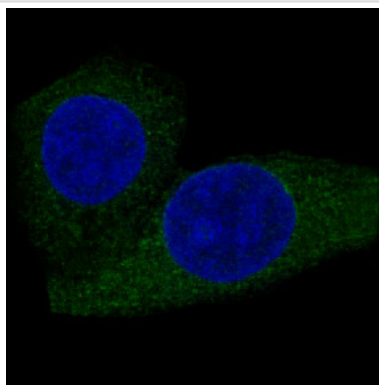
Images



Western blot analysis of CPT2 expression in MCF-7 cell lysate.



Immunohistochemical analysis of paraffin-embedded human ovarian cancer, using CPT2 Antibody.



Immunofluorescent analysis of MCF-7 cells, using CPT2 Antibody.

Product Description

The protein encoded by this gene is a nuclear protein which is transported to the mitochondrial inner membrane. Together with carnitine palmitoyltransferase I, the encoded protein oxidizes long-chain fatty acids in the mitochondria. Defects in this gene are associated with mitochondrial long-chain fatty-acid (LCFA) oxidation disorders.

Background

The protein encoded by this gene is a nuclear protein which is transported to the mitochondrial inner membrane. Together with carnitine palmitoyltransferase I, the encoded protein oxidizes long-chain fatty acids in the mitochondria. Defects in this gene are associated with mitochondrial long-chain fatty-acid (LCFA) oxidation disorders.

Note: This product is for in vitro research use only