

ABCF1 Rabbit mAb

Catalog No: #58972

Package Size: #58972-1 50ul #58972-2 100ul

Orders: order@signalwayantibody.com

Support: tech@signalwayantibody.com

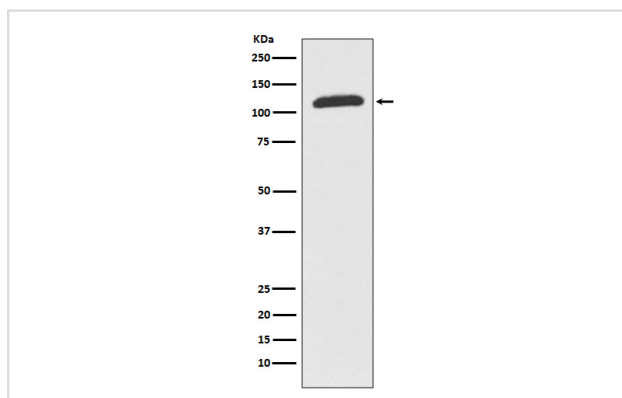
Description

Product Name	ABCF1 Rabbit mAb
Host Species	Rabbit
Clonality	Monoclonal
Isotype	Rabbit IgG
Purification	Affinity-chromatography
Applications	WB IHC ICC/IF
Species Reactivity	Human Rat
Specificity	ABCF1 Antibody detects endogenous levels of ABCF1
Immunogen Description	A synthesized peptide derived from human ABCF1
Other Names	ABC27; ABC50; ABCF1; ATP-binding cassette 50; ATP-binding cassette 50 (TNF-alpha stimulated); TNF-alpha-stimulated ABC protein;
Accession No.	Uniprot:Q8NE71
Uniprot	Q8NE71
Formulation	Rabbit IgG in phosphate buffered saline , pH 7.4, 150mM NaCl, 0.02% sodium azide and 50% glycerol.
Storage	Store at +4°C short term. Store at -20°C long term. Avoid freeze / thaw cycle.

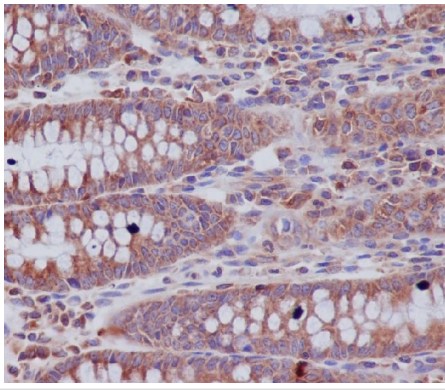
Application Details

WB 1:500~1:2000 IHC 1:50~1:100 ICC/IF 1:50~1:100

Images



Western blot analysis of ABCF1 expression in K562 cell lysate.



Immunohistochemical analysis of paraffin-embedded human colon, using ABCF1 Antibody.

Product Description

ABCF1 May function in mRNA translation. Belongs to the ABC transporter superfamily. ABCF family. EF3 subfamily. Induced by TNF (in cultured synoviocytes). Interacts with eukaryotic initiation factor 2 (eIF2). Associates with the ribosomes. 2 isoforms of the human protein are produced by alternative splicing. Note: This description may include information from UniProtKB.

Background

ABCF1 May function in mRNA translation. Belongs to the ABC transporter superfamily. ABCF family. EF3 subfamily. Induced by TNF (in cultured synoviocytes). Interacts with eukaryotic initiation factor 2 (eIF2). Associates with the ribosomes. 2 isoforms of the human protein are produced by alternative splicing. Note: This description may include information from UniProtKB.

Note: This product is for in vitro research use only