

ATG9A Rabbit mAb

Catalog No: #58973

Package Size: #58973-1 50ul #58973-2 100ul

Orders: order@signalwayantibody.com

Support: tech@signalwayantibody.com

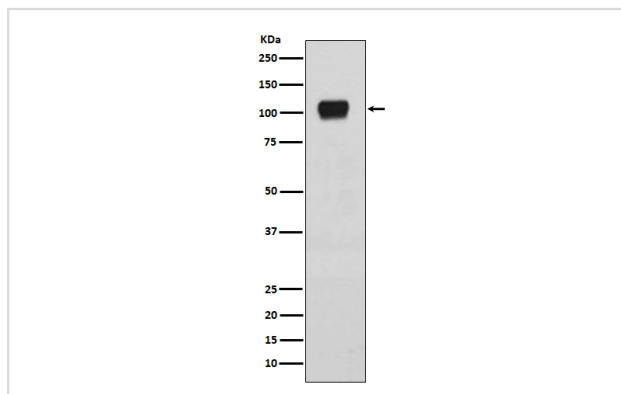
Description

Product Name	ATG9A Rabbit mAb
Host Species	Rabbit
Clonality	Monoclonal
Isotype	Rabbit IgG
Purification	Affinity-chromatography
Applications	WB IHC ICC/IF IP
Species Reactivity	Human Mouse Rat
Specificity	ATG9A Antibody detects endogenous levels of ATG9A
Immunogen Description	A synthesized peptide derived from human ATG9A
Other Names	ATG9A; APG9-like 1; Autophagy 9-like 1 protein; Autophagy-related protein 9A; MGD3208; MATG9; APG9 autophagy 9-like 1; APG9L1; Autophagy related 9A;
Accession No.	Uniprot:Q7Z3C6
Uniprot	Q7Z3C6
Calculated MW	94kDa
Formulation	Rabbit IgG in phosphate buffered saline , pH 7.4, 150mM NaCl, 0.02% sodium azide and 50% glycerol.
Storage	Store at +4°C short term. Store at -20°C long term. Avoid freeze / thaw cycle.

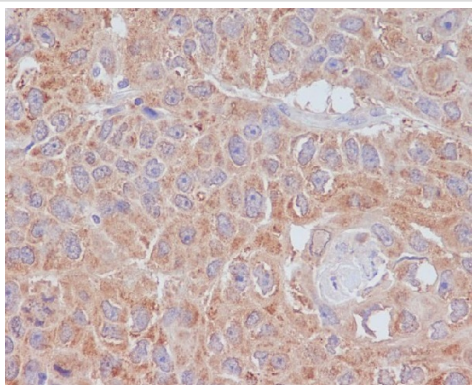
Application Details

WB 1:1000~1:2000 IHC 1:50~1:200 ICC/IF 1:50~1:200 IP 1:50

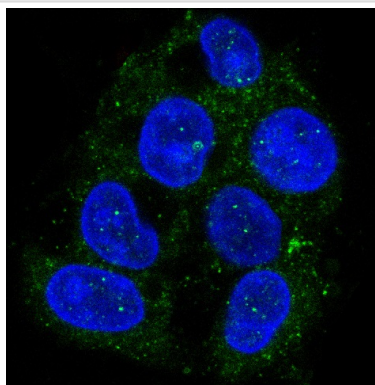
Images



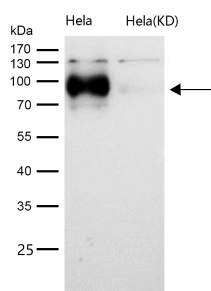
Western blot analysis of ATG9A expression in HepG2 cell lysate.



Immunohistochemical analysis of paraffin-embedded human lung cancer, using ATG9A Antibody.



Immunofluorescent analysis of Hepg2 cells, using ATG9A Antibody.



All lanes use the Antibody at 1:1K dilution for 1 hour at room temperature.

Product Description

Involved in autophagy and cytoplasm to vacuole transport (Cvt) vesicle formation. Plays a key role in the organization of the preautophagosomal structure/phagophore assembly site (PAS), the nucleating site for formation of the sequestering vesicle.

Background

Involved in autophagy and cytoplasm to vacuole transport (Cvt) vesicle formation. Plays a key role in the organization of the preautophagosomal structure/phagophore assembly site (PAS), the nucleating site for formation of the sequestering vesicle.

Note: This product is for in vitro research use only