

ILK Rabbit mAb

Catalog No: #58982

Package Size: #58982-1 50ul #58982-2 100ul

Orders: order@signalwayantibody.comSupport: tech@signalwayantibody.com

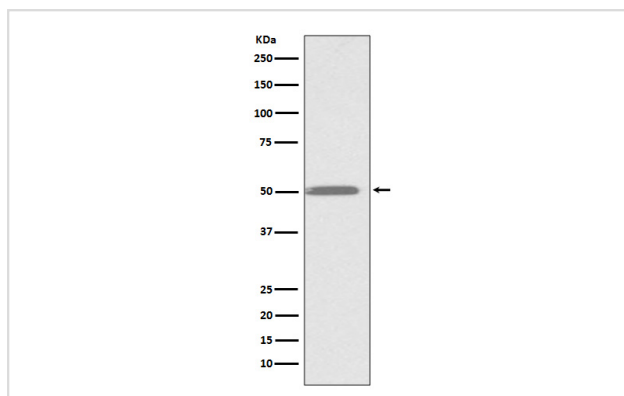
Description

Product Name	ILK Rabbit mAb
Host Species	Rabbit
Clonality	Monoclonal
Isotype	Rabbit IgG
Purification	Affinity-chromatography
Applications	WB IHC ICC/IF IP FC
Species Reactivity	Human Mouse Rat
Specificity	ILK Antibody detects endogenous levels of ILK
Immunogen Description	A synthesized peptide derived from human ILK
Other Names	ILK; DKFZp686F1765; P59; ILK1; Integrin linked protein kinas;
Accession No.	Uniprot:Q13418
Uniprot	Q13418
Formulation	Rabbit IgG in phosphate buffered saline , pH 7.4, 150mM NaCl, 0.02% sodium azide and 50% glycerol.
Storage	Store at +4°C short term. Store at -20°C long term. Avoid freeze / thaw cycle.

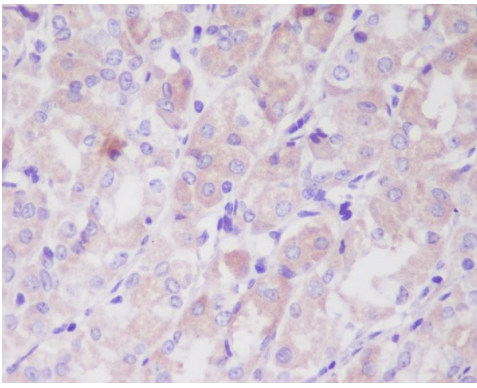
Application Details

WB 1:1000~1:5000 IHC 1:50~1:200 ICC/IF 1:50~1:200 IP 1:50 FC 1:50

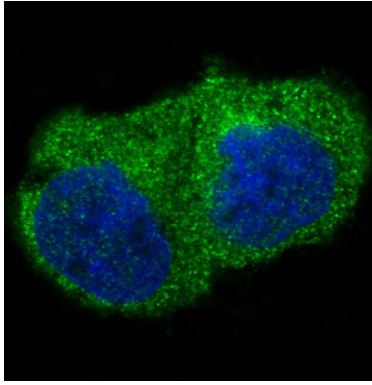
Images



Western blot analysis of ILK expression in K562 cell lysate.



Immunohistochemical analysis of paraffin-embedded human stomach, using ILK Antibody.



Immunofluorescent analysis of 293 cells, using ILK Antibody.

Product Description

Integrin-linked kinases (ILKs) couple integrins and growth factors to downstream pathways involved in cell survival, cell cycle control, cell-cell adhesion and cell motility. ILK functions as a scaffold bridging the extracellular matrix (ECM) and growth factor receptors to the actin cytoskeleton through interactions with integrin, PINCH (which links ILK to the RTKs via Nck2), CH-ILKBP and affixin.

Background

Integrin-linked kinases (ILKs) couple integrins and growth factors to downstream pathways involved in cell survival, cell cycle control, cell-cell adhesion and cell motility. ILK functions as a scaffold bridging the extracellular matrix (ECM) and growth factor receptors to the actin cytoskeleton through interactions with integrin, PINCH (which links ILK to the RTKs via Nck2), CH-ILKBP and affixin.

Note: This product is for in vitro research use only