

MTCO2 Rabbit mAb

Catalog No: #58985

Package Size: #58985-1 50ul #58985-2 100ul

Orders: order@signalwayantibody.com

Support: tech@signalwayantibody.com

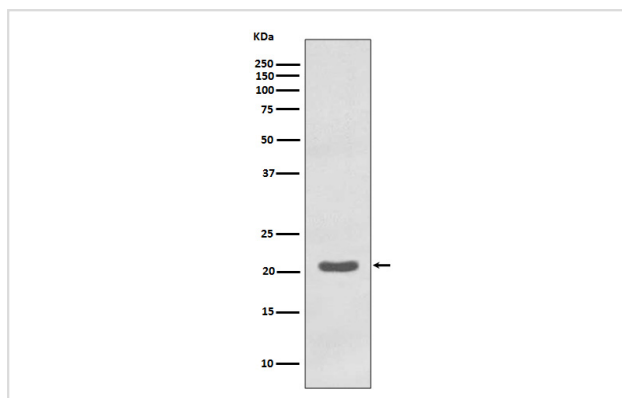
Description

Product Name	MTCO2 Rabbit mAb
Host Species	Rabbit
Clonality	Monoclonal
Isotype	Rabbit IgG
Purification	Affinity-chromatography
Applications	WB IHC ICC/IF IP FC
Species Reactivity	Human
Specificity	MTCO2 Antibody detects endogenous levels of MTCO2
Immunogen Description	A synthesized peptide derived from human MTCO2
Other Names	MT-CO2; COX2; CO2; Cytochrome c oxidase II; MTCO2; COII; COXII;
Accession No.	Uniprot:P00403
Uniprot	P00403
Formulation	Rabbit IgG in phosphate buffered saline , pH 7.4, 150mM NaCl, 0.02% sodium azide and 50% glycerol.
Storage	Store at +4°C short term. Store at -20°C long term. Avoid freeze / thaw cycle.

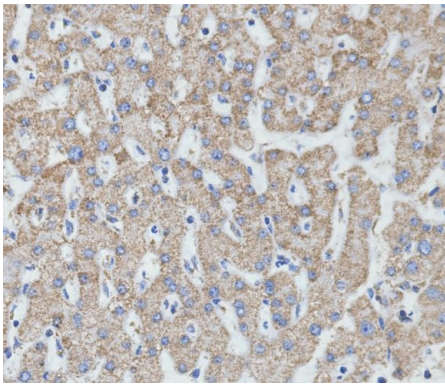
Application Details

WB 1:500~1:2000 IHC 1:50~1:200 ICC/IF 1:50~1:200 IP 1:20 FC 1:50

Images



Western blot analysis of MTCO2 expression in K562 cell lysate.



Immunohistochemical analysis of paraffin-embedded human liver, using MTCO2 Antibody.

Product Description

Cytochrome c oxidase is the component of the respiratory chain that catalyzes the reduction of oxygen to water. Subunits 1-3 form the functional core of the enzyme complex. Subunit 2 transfers the electrons from cytochrome c via its binuclear copper A center to the bimetallic center of the catalytic subunit 1.

Background

Cytochrome c oxidase is the component of the respiratory chain that catalyzes the reduction of oxygen to water. Subunits 1-3 form the functional core of the enzyme complex. Subunit 2 transfers the electrons from cytochrome c via its binuclear copper A center to the bimetallic center of the catalytic subunit 1.

Note: This product is for in vitro research use only