

Glutaminase Rabbit mAb

Catalog No: #58987

Package Size: #58987-1 50ul #58987-2 100ul

Orders: order@signalwayantibody.com

Support: tech@signalwayantibody.com

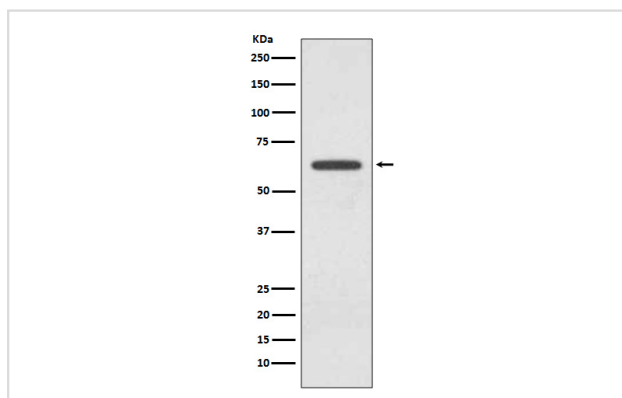
Description

Product Name	Glutaminase Rabbit mAb
Host Species	Rabbit
Clonality	Monoclonal
Isotype	Rabbit IgG
Purification	Affinity-chromatography
Applications	WB IHC ICC/IF
Species Reactivity	Human Mouse Rat
Specificity	Glutaminase Antibody detects endogenous levels of Glutaminase
Immunogen Description	A synthesized peptide derived from human Glutaminase
Other Names	Glutaminase kidney isoform; GLS; GLS1, KGA; K-glutaminase; GAM; GAC; Glutaminase C; L-glutamine amidohydrolase;
Accession No.	Uniprot:O94925
Uniprot	O94925
Formulation	Rabbit IgG in phosphate buffered saline , pH 7.4, 150mM NaCl, 0.02% sodium azide and 50% glycerol.
Storage	Store at +4°C short term. Store at -20°C long term. Avoid freeze / thaw cycle.

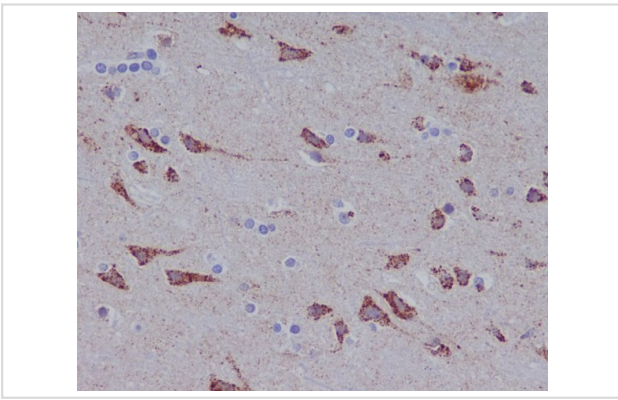
Application Details

WB 1:1000~1:2000 IHC 1:50~1:200 ICC/IF 1:50~1:200

Images



Western blot analysis of Glutaminase expression in 293T cell lysate.



Immunohistochemical analysis of paraffin-embedded human brain, using Glutaminase Antibody.

Product Description

Catalyzes the first reaction in the primary pathway for the renal catabolism of glutamine. Plays a role in maintaining acid-base homeostasis. Regulates the levels of the neurotransmitter glutamate in the brain. Isoform 2 lacks catalytic activity. Isoform 1 and isoform 3 are activated by phosphate. Inhibited by BPTES. BPTES binds between subunits and favors dissociation of the tetramer into dimers.

Background

Catalyzes the first reaction in the primary pathway for the renal catabolism of glutamine. Plays a role in maintaining acid-base homeostasis. Regulates the levels of the neurotransmitter glutamate in the brain. Isoform 2 lacks catalytic activity. Isoform 1 and isoform 3 are activated by phosphate. Inhibited by BPTES. BPTES binds between subunits and favors dissociation of the tetramer into dimers.

Note: This product is for in vitro research use only