

Moesin Rabbit mAb

Catalog No: #58989

Package Size: #58989-1 50ul #58989-2 100ul

Orders: order@signalwayantibody.com

Support: tech@signalwayantibody.com

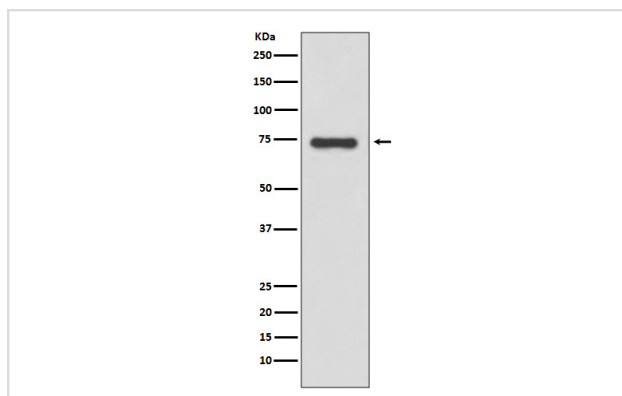
Description

Product Name	Moesin Rabbit mAb
Host Species	Rabbit
Clonality	Monoclonal
Isotype	Rabbit IgG
Purification	Affinity-chromatography
Applications	WB IHC ICC/IF IP FC
Species Reactivity	Human Mouse Rat
Specificity	Moesin Antibody detects endogenous levels of Moesin
Immunogen Description	A synthesized peptide derived from human Moesin
Other Names	MSN; Moesin;
Accession No.	Uniprot:P26038
Uniprot	P26038
Formulation	Rabbit IgG in phosphate buffered saline , pH 7.4, 150mM NaCl, 0.02% sodium azide and 50% glycerol.
Storage	Store at +4°C short term. Store at -20°C long term. Avoid freeze / thaw cycle.

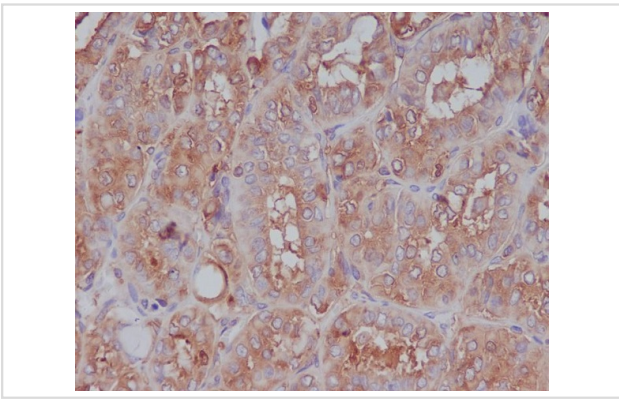
Application Details

WB 1:1000~1:2000 IHC 1:50~1:100 ICC/IF 1:50~1:100 IP 1:20 FC 1:20

Images



Western blot analysis of Moesin expression in HeLa cell lysate.



Immunohistochemical analysis of paraffin-embedded human thyroid cancer, using Moesin Antibody.

Product Description

The ezrin, radixin, and moesin (ERM) proteins function as linkers between the plasma membrane and the actin cytoskeleton and are involved in cell adhesion, membrane ruffling, and microvilli formation. ERM proteins undergo intra or intermolecular interaction between their amino- and carboxy-terminal domains, existing as inactive cytosolic monomers or dimers.

Background

The ezrin, radixin, and moesin (ERM) proteins function as linkers between the plasma membrane and the actin cytoskeleton and are involved in cell adhesion, membrane ruffling, and microvilli formation. ERM proteins undergo intra or intermolecular interaction between their amino- and carboxy-terminal domains, existing as inactive cytosolic monomers or dimers.

Note: This product is for in vitro research use only