

Cytochrome C Rabbit mAb

Catalog No: #58999



Package Size: #58999-1 50ul #58999-2 100ul

Orders: [order@signalwayantibody.com](mailto:order@signalwayantibody.com)  
Support: [tech@signalwayantibody.com](mailto:tech@signalwayantibody.com)

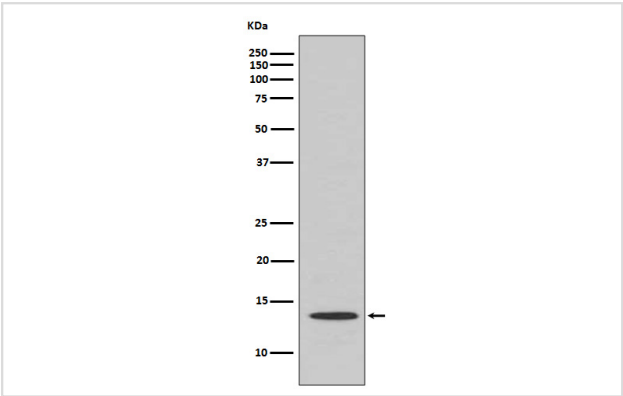
Description

Product Name	Cytochrome C Rabbit mAb
Host Species	Rabbit
Clonality	Monoclonal
Isotype	Rabbit IgG
Purification	Affinity-chromatography
Applications	WB IHC ICC/IF IP
Species Reactivity	Human Mouse Rat
Specificity	Cytochrome C Antibody detects endogenous levels of Cytochrome C
Immunogen Description	A synthesized peptide derived from human Cytochrome C
Other Names	CYC; CYCS; Cytochrome c; HCS; THC4;
Accession No.	Uniprot:P99999
Uniprot	P99999
Formulation	Rabbit IgG in phosphate buffered saline , pH 7.4, 150mM NaCl, 0.02% sodium azide and 50% glycerol.
Storage	Store at +4°C short term. Store at -20°C long term. Avoid freeze / thaw cycle.

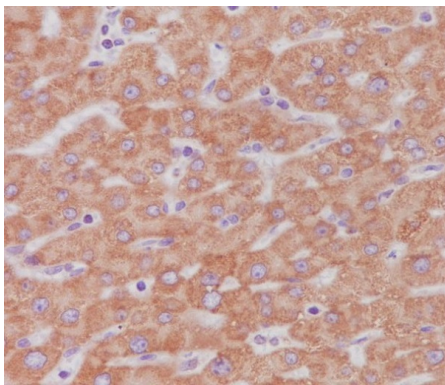
Application Details

WB 1:1000~1:2000 IHC 1:50~1:200 ICC/IF 1:50~1:200 IP 1:30

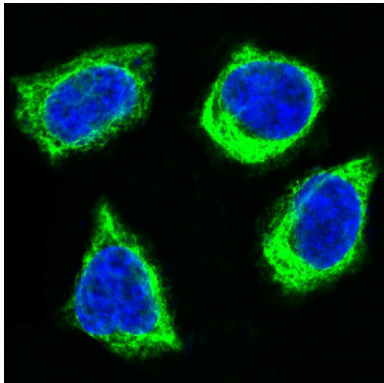
Images



Western blot analysis of Cytochrome C expression in Human kidney lysate.



Immunohistochemical analysis of paraffin-embedded human liver, using Cytochrome C Antibody.



Immunofluorescent analysis of HeLa cells, using Cytochrome C Antibody.

## Product Description

Cytochrome C is a well conserved electron-transport protein and is part of the respiratory chain localized to mitochondrial intermembrane space. Plays a role in apoptosis. Suppression of the anti-apoptotic members or activation of the pro-apoptotic members of the Bcl-2 family leads to altered mitochondrial membrane permeability resulting in release of cytochrome C into the cytosol.

## Background

Cytochrome C is a well conserved electron-transport protein and is part of the respiratory chain localized to mitochondrial intermembrane space. Plays a role in apoptosis. Suppression of the anti-apoptotic members or activation of the pro-apoptotic members of the Bcl-2 family leads to altered mitochondrial membrane permeability resulting in release of cytochrome C into the cytosol.

Note: This product is for in vitro research use only