

Rho Rabbit mAb

Catalog No: #59001

Package Size: #59001-1 50ul #59001-2 100ul

Orders: order@signalwayantibody.com

Support: tech@signalwayantibody.com

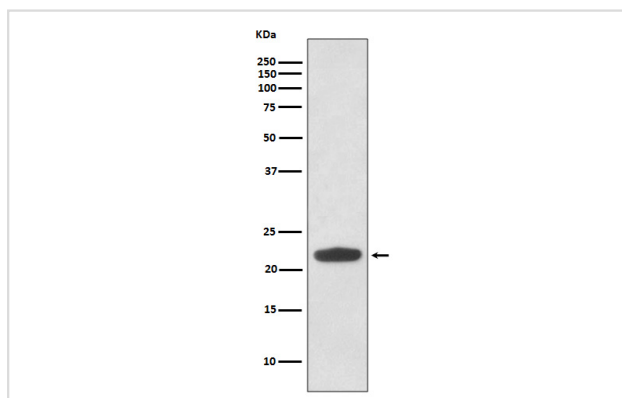
Description

Product Name	Rho Rabbit mAb
Host Species	Rabbit
Clonality	Monoclonal
Isotype	Rabbit IgG
Purification	Affinity-chromatography
Applications	WB IHC ICC/IF
Species Reactivity	Human Mouse Rat
Specificity	Rho Antibody detects endogenous levels of Rho
Immunogen Description	A synthesized peptide derived from human Rho
Other Names	ARH12; ARHA; H12; RHO12; RHOA; RHOB; RHOC; RHOH12; Small GTP binding protein RhoA; Transforming protein RhoA;
Accession No.	Uniprot:P61586
Uniprot	P61586
Formulation	Rabbit IgG in phosphate buffered saline , pH 7.4, 150mM NaCl, 0.02% sodium azide and 50% glycerol.
Storage	Store at +4°C short term. Store at -20°C long term. Avoid freeze / thaw cycle.

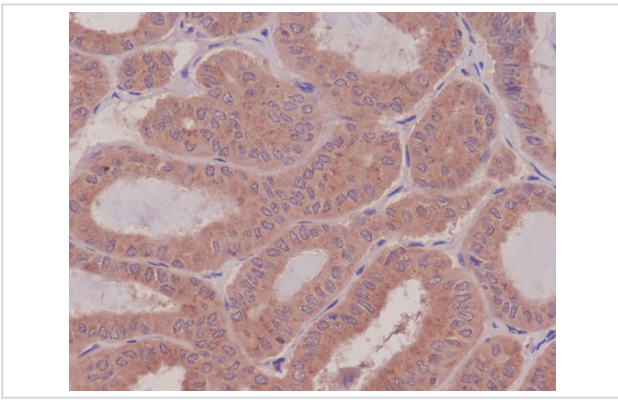
Application Details

WB 1:1000~1:2000 IHC 1:50~1:200 ICC/IF 1:50~1:200

Images



Western blot analysis of Rho expression in HeLa cell lysate.



Immunohistochemical analysis of paraffin-embedded human thyroid cancer, using Rho Antibody.

Product Description

Act as molecular switches, regulating processes such as cell migration, adhesion, proliferation and differentiation. They are activated by guanine nucleotide exchange factors (GEFs), which catalyze the exchange of bound GDP for GTP, and inhibited by GTPase activating proteins (GAPs), which catalyze the hydrolysis of GTP to GDP.

Background

Act as molecular switches, regulating processes such as cell migration, adhesion, proliferation and differentiation. They are activated by guanine nucleotide exchange factors (GEFs), which catalyze the exchange of bound GDP for GTP, and inhibited by GTPase activating proteins (GAPs), which catalyze the hydrolysis of GTP to GDP.

Note: This product is for in vitro research use only