

MUC16 Rabbit mAb

Catalog No: #59003

Package Size: #59003-1 50ul #59003-2 100ul

Orders: order@signalwayantibody.com

Support: tech@signalwayantibody.com

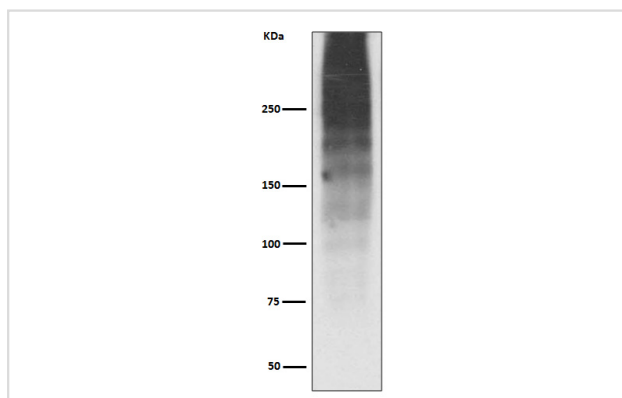
Description

Product Name	MUC16 Rabbit mAb
Host Species	Rabbit
Clonality	Monoclonal
Isotype	Rabbit IgG
Purification	Affinity-chromatography
Applications	WB ICC/IF FC
Species Reactivity	Human
Specificity	MUC16 Antibody detects endogenous levels of MUC16
Immunogen Description	A synthesized peptide derived from human MUC16
Other Names	Cancer antigen 125; CA125; CA125 ovarian cancer; MUC 16; Mucin16; Ovarian cancer related tumor marker CA125;
Accession No.	Uniprot:Q8WXI7
Uniprot	Q8WXI7
Formulation	Rabbit IgG in phosphate buffered saline , pH 7.4, 150mM NaCl, 0.02% sodium azide and 50% glycerol.
Storage	Store at +4°C short term. Store at -20°C long term. Avoid freeze / thaw cycle.

Application Details

WB 1:5000~1:20000 ICC/IF 1:50~1:200 FC 1:100

Images



Western blot analysis of MUC16 expression in Human ovary cancer lysate.

Product Description

The mucins are a family of highly glycosylated, secreted proteins with a basic structure consisting of a variable number of tandem repeats (VNTRs). Thought to provide a protective, lubricating barrier against particles and infectious agents at mucosal surfaces.

Background

The mucins are a family of highly glycosylated, secreted proteins with a basic structure consisting of a variable number of tandem repeats (VNTRs). Thought to provide a protective, lubricating barrier against particles and infectious agents at mucosal surfaces.

Note: This product is for in vitro research use only