

## Cytokeratin 13 Rabbit mAb

Catalog No: #59008

Package Size: #59008-1 50ul #59008-2 100ul

Orders: order@signalwayantibody.com

Support: tech@signalwayantibody.com

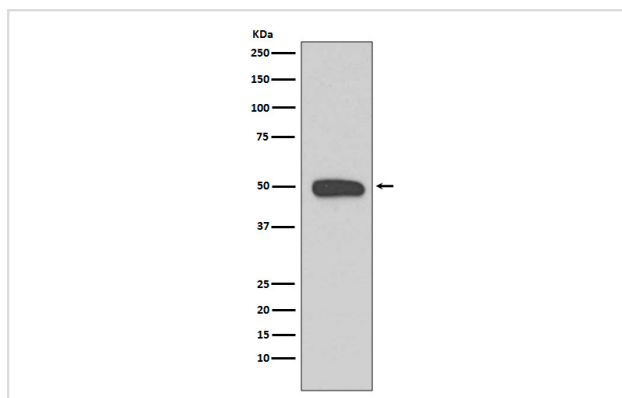
## Description

Product Name	Cytokeratin 13 Rabbit mAb
Host Species	Rabbit
Clonality	Monoclonal
Isotype	Rabbit IgG
Purification	Affinity-chromatography
Applications	WB IHC ICC/IF
Species Reactivity	Human Mouse
Specificity	Cytokeratin 13 Antibody detects endogenous levels of Cytokeratin 13
Immunogen Description	A synthesized peptide derived from human Cytokeratin 13
Other Names	Keratin, type I cytoskeletal 13; Krt1-13; Cytokeratin 13; CK13; Keratin 13; KRT13; WSN2;
Accession No.	Uniprot:P13646
Uniprot	P13646
Formulation	Rabbit IgG in phosphate buffered saline , pH 7.4, 150mM NaCl, 0.02% sodium azide and 50% glycerol.
Storage	Store at +4°C short term. Store at -20°C long term. Avoid freeze / thaw cycle.

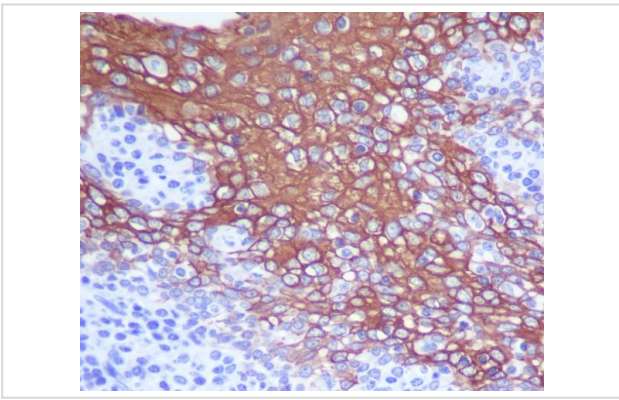
## Application Details

WB 1:50000~1:100000 IHC 1:50~1:200 ICC/IF 1:50~1:200

## Images



Western blot analysis of Cytokeratin 13 expression in A431 cell lysate.



Immunohistochemical analysis of paraffin-embedded human tonsil, using Cytokeratin 13 Antibody.

## Product Description

Cytokeratin 13 is a member of the keratin gene family.

## Background

Cytokeratin 13 is a member of the keratin gene family.

Note: This product is for in vitro research use only