

CD38 Rabbit mAb

Catalog No: #59009

Package Size: #59009-1 50ul #59009-2 100ul

Orders: order@signalwayantibody.comSupport: tech@signalwayantibody.com

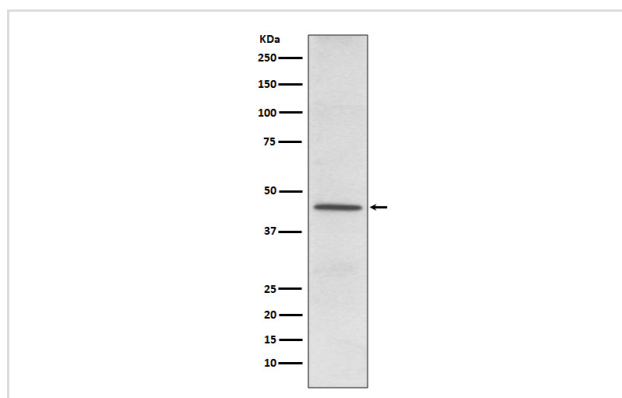
Description

Product Name	CD38 Rabbit mAb
Host Species	Rabbit
Clonality	Monoclonal
Isotype	Rabbit IgG
Purification	Affinity-chromatography
Applications	WB IHC
Species Reactivity	Human
Specificity	CD38 Antibody detects endogenous levels of CD38
Immunogen Description	A synthesized peptide derived from human CD38
Other Names	CD38 antigen; ADP ribosyl cyclase 1; Cd38-rs1; ADP ribosyl cyclase; ADP ribosyl cyclase/cyclic ADP-ribose hydrolase; ADP-ribosyl cyclase 1; cADPr hydrolase 1; CD38 antigen (p45); CD38 molecule;
Accession No.	Uniprot:P28907
Uniprot	P28907
Formulation	Rabbit IgG in phosphate buffered saline , pH 7.4, 150mM NaCl, 0.02% sodium azide and 50% glycerol.
Storage	Store at +4°C short term. Store at -20°C long term. Avoid freeze / thaw cycle.

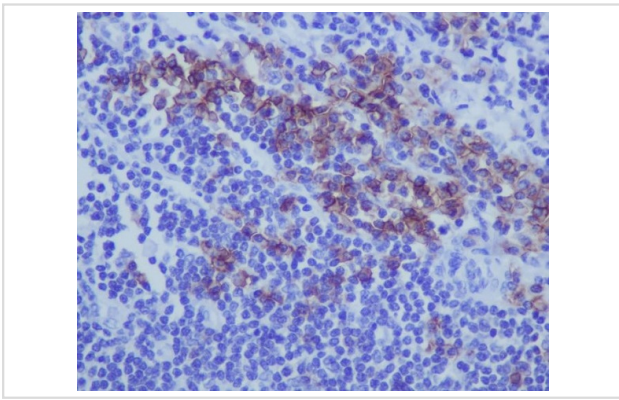
Application Details

WB 1:500~1:2000 IHC 1:100~1:500

Images



Western blot analysis of CD38 expression in HeLa cell lysate.



Immunohistochemical analysis of paraffin-embedded human tonsil, using CD38 Antibody.

Product Description

CD38 is a transmembrane protein involved in several important biological processes, including immune response, insulin secretion, and social behavior. Synthesizes cyclic ADP-ribose, a second messenger for glucose-induced insulin secretion. Also has cADPr hydrolase activity. Also moonlights as a receptor in cells of the immune system.

Background

CD38 is a transmembrane protein involved in several important biological processes, including immune response, insulin secretion, and social behavior. Synthesizes cyclic ADP-ribose, a second messenger for glucose-induced insulin secretion. Also has cADPr hydrolase activity. Also moonlights as a receptor in cells of the immune system.

Note: This product is for in vitro research use only