

pro Caspase 10 Rabbit mAb

Catalog No: #59011

Package Size: #59011-1 50ul #59011-2 100ul

Orders: order@signalwayantibody.com

Support: tech@signalwayantibody.com

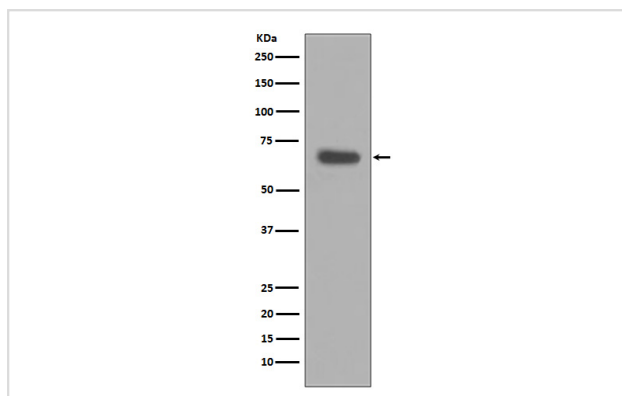
Description

Product Name	pro Caspase 10 Rabbit mAb
Host Species	Rabbit
Clonality	Monoclonal
Isotype	Rabbit IgG
Purification	Affinity-chromatography
Applications	WB IHC ICC/IF IP FC
Species Reactivity	Human Mouse
Specificity	pro Caspase 10 Antibody detects endogenous levels of pro Caspase 10
Immunogen Description	A synthesized peptide derived from human pro Caspase 10
Other Names	Apoptotic protease Mch4; CASP10; Caspase 10; FLICE2; ICE like apoptotic protease 4; FADD-like ICE2;
Accession No.	Uniprot:Q92851
Uniprot	Q92851
Formulation	Rabbit IgG in phosphate buffered saline , pH 7.4, 150mM NaCl, 0.02% sodium azide and 50% glycerol.
Storage	Store at +4°C short term. Store at -20°C long term. Avoid freeze / thaw cycle.

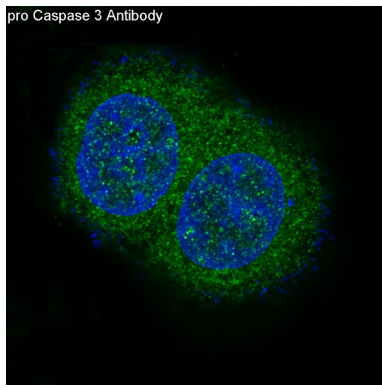
Application Details

WB 1:500~1:1000 IHC 1:50~1:200 ICC/IF 1:50~1:200 IP 1:10 FC 1:50

Images



Western blot analysis of pro Caspase 10 expression in HeLa cell lysate.



Immunofluorescent analysis of MCF-7 cells, using pro Caspase 10 Antibody.

Product Description

Caspases are a family of cytosolic aspartate specific cysteine proteases. Involved in the activation cascade of caspases responsible for apoptosis execution. Cleaved Caspase 10 leads to the processing of Caspase 3 and Caspase 7, initiating a caspase cascade and subsequent apoptosis.

Background

Caspases are a family of cytosolic aspartate specific cysteine proteases. Involved in the activation cascade of caspases responsible for apoptosis execution. Cleaved Caspase 10 leads to the processing of Caspase 3 and Caspase 7, initiating a caspase cascade and subsequent apoptosis.

Note: This product is for in vitro research use only