

pro Caspase 3 Rabbit mAb

Catalog No: #59012

Package Size: #59012-1 50ul #59012-2 100ul

Orders: order@signalwayantibody.com

Support: tech@signalwayantibody.com

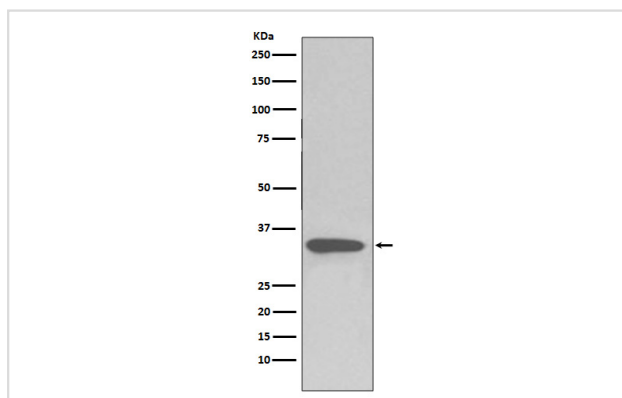
Description

Product Name	pro Caspase 3 Rabbit mAb
Host Species	Rabbit
Clonality	Monoclonal
Isotype	Rabbit IgG
Purification	Affinity-chromatography
Applications	WB IHC ICC/IF IP FC
Species Reactivity	Human Mouse
Specificity	pro Caspase 3 Antibody detects endogenous levels of pro Caspase 3
Immunogen Description	A synthesized peptide derived from human pro Caspase 3
Other Names	Yama; CASP3; Caspase 3; CPP32; Caspase 3 apoptosis related cysteine peptidase; CPP32B; Procaspase 3; SCA 1; SCA1; Yama protein;
Accession No.	Uniprot:P42574
Uniprot	P42574
Formulation	Rabbit IgG in phosphate buffered saline , pH 7.4, 150mM NaCl, 0.02% sodium azide and 50% glycerol.
Storage	Store at +4°C short term. Store at -20°C long term. Avoid freeze / thaw cycle.

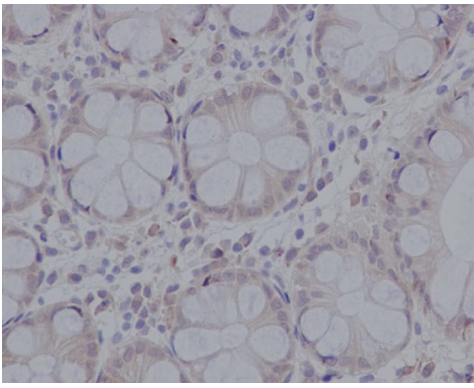
Application Details

WB 1:1000~1:2000 IHC 1:50~1:200 ICC/IF 1:50~1:200 IP 1:50 FC 1:50

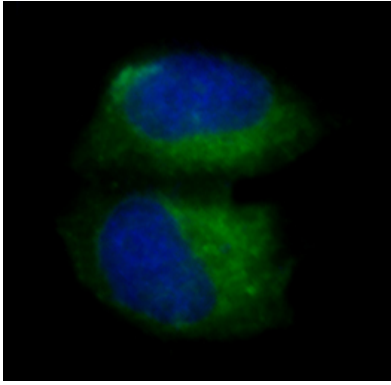
Images



Western blot analysis of pro Caspase 3 expression in Jurkat cell lysate.



Immunohistochemical analysis of paraffin-embedded human colon, using pro Caspase 3 Antibody.



Immunofluorescent analysis of HeLa cells, using pro Caspase 3 Antibody.

Product Description

Caspases are a family of cytosolic aspartate specific cysteine proteases. Involved in the activation cascade of caspases responsible for apoptosis execution. Cleaved Caspase 10 leads to the processing of Caspase 3 and Caspase 7, initiating a caspase cascade and subsequent apoptosis.

Background

Caspases are a family of cytosolic aspartate specific cysteine proteases. Involved in the activation cascade of caspases responsible for apoptosis execution. Cleaved Caspase 10 leads to the processing of Caspase 3 and Caspase 7, initiating a caspase cascade and subsequent apoptosis.

Note: This product is for in vitro research use only