

Caspase-8 Rabbit mAb

Catalog No: #59014

Package Size: #59014-1 50ul #59014-2 100ul

Orders: order@signalwayantibody.com

Support: tech@signalwayantibody.com

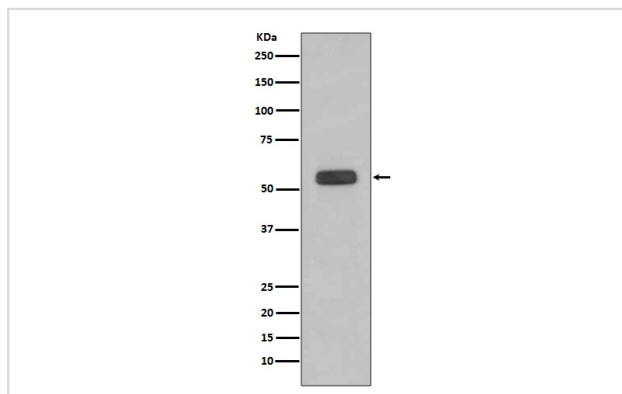
Description

Product Name	Caspase-8 Rabbit mAb
Host Species	Rabbit
Clonality	Monoclonal
Isotype	Rabbit IgG
Purification	Affinity-chromatography
Applications	WB IHC ICC/IF
Species Reactivity	Human
Specificity	Caspase-8 Antibody detects endogenous levels of Caspase-8
Immunogen Description	A synthesized peptide derived from human Caspase-8
Other Names	Caspase 8; CASP-8; Apoptotic cysteine protease; Apoptotic protease Mch-5; FADD-homologous ICE/ced-3-like protease; ICE-like apoptotic protease 5; MORT1-associated ced-3 homolog; MACH; Caspase-8 subunit p18; CAP4;
Accession No.	Uniprot:Q14790
Uniprot	Q14790
Formulation	Rabbit IgG in phosphate buffered saline , pH 7.4, 150mM NaCl, 0.02% sodium azide and 50% glycerol.
Storage	Store at +4°C short term. Store at -20°C long term. Avoid freeze / thaw cycle.

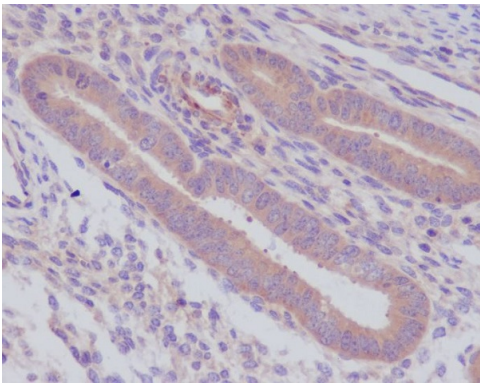
Application Details

WB 1:1000~1:2000 IHC 1:50~1:200 ICC/IF 1:50~1:200

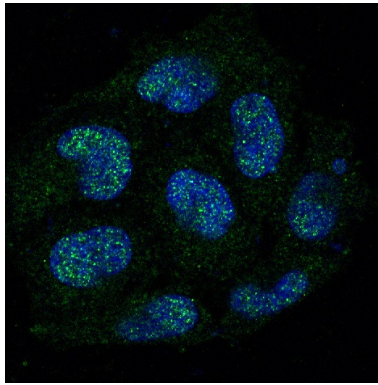
Images



Western blot analysis of Caspase-8 expression in HeLa cell lysate.



Immunohistochemical analysis of paraffin-embedded human uterus, using Caspase-8 Antibody.



Immunofluorescent analysis of HeLa cells, using Caspase-8 Antibody.

Product Description

Caspases are a family of cytosolic aspartate specific cysteine proteases. Involved in the activation cascade of caspases responsible for apoptosis execution. Activated caspase-8 cleaves and activates downstream effector caspases such as caspase-1, -3, -6, and -7.

Background

Caspases are a family of cytosolic aspartate specific cysteine proteases. Involved in the activation cascade of caspases responsible for apoptosis execution. Activated caspase-8 cleaves and activates downstream effector caspases such as caspase-1, -3, -6, and -7.

Note: This product is for in vitro research use only