

SHP2 Rabbit mAb

Catalog No: #59015



Package Size: #59015-1 50ul #59015-2 100ul

Orders: order@signalwayantibody.com
Support: tech@signalwayantibody.com

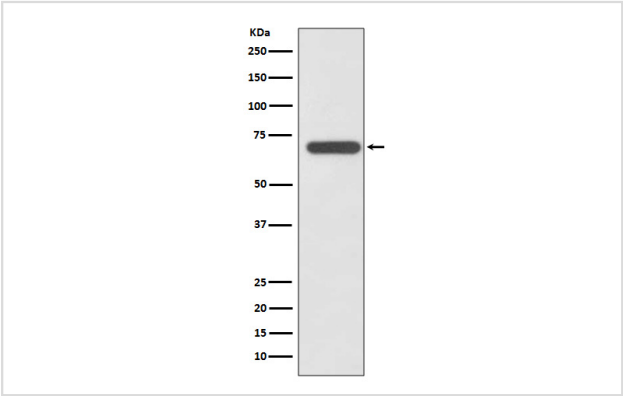
Description

Product Name	SHP2 Rabbit mAb
Host Species	Rabbit
Clonality	Monoclonal
Isotype	Rabbit IgG
Purification	Affinity-chromatography
Applications	WB IP
Species Reactivity	Human Mouse Rat
Specificity	SHP2 Antibody detects endogenous levels of SHP2
Immunogen Description	A synthesized peptide derived from human SHP2
Other Names	CFC; NS1; SHP2; BPTP3; SH-PTP2; SH-PTP3; Tyrosine-protein phosphatase non-receptor type 11; PTP-1D; PTP2C; Protein-tyrosine phosphatase 1D;
Accession No.	Uniprot:Q06124
Uniprot	Q06124
Calculated MW	68kDa
Formulation	Rabbit IgG in phosphate buffered saline , pH 7.4, 150mM NaCl, 0.02% sodium azide and 50% glycerol.
Storage	Store at +4°C short term. Store at -20°C long term. Avoid freeze / thaw cycle.

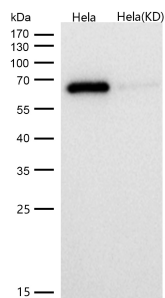
Application Details

WB 1:500~1:1000 IP 1:20

Images



Western blot analysis of SHP2 expression in A431 cell lysate.



All lanes use the Antibody at 1:1K dilution for 1 hour at room temperature.

Product Description

SHP-2 is a ubiquitously expressed, nonreceptor protein tyrosine phosphatase (PTP). It participates in signaling events downstream of receptors for growth factors, cytokines, hormones, antigens, and extracellular matrices in the control of cell growth, differentiation, migration, and death.

Background

SHP-2 is a ubiquitously expressed, nonreceptor protein tyrosine phosphatase (PTP). It participates in signaling events downstream of receptors for growth factors, cytokines, hormones, antigens, and extracellular matrices in the control of cell growth, differentiation, migration, and death.

Note: This product is for in vitro research use only