

## Caspase-6 p18 Rabbit mAb

Catalog No: #59018

Package Size: #59018-1 50ul #59018-2 100ul

Orders: order@signalwayantibody.com

Support: tech@signalwayantibody.com

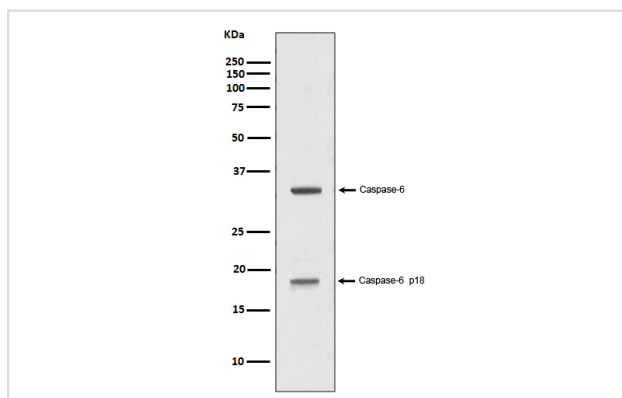
## Description

Product Name	Caspase-6 p18 Rabbit mAb
Host Species	Rabbit
Clonality	Monoclonal
Isotype	Rabbit IgG
Purification	Affinity-chromatography
Applications	WB IP
Species Reactivity	Human
Specificity	Caspase-6 p18 Antibody detects endogenous levels of Caspase-6 p18
Immunogen Description	A synthesized peptide derived from human Caspase-6 p18
Other Names	Apoptotic protease MCH2; CASP6; Caspase 6; Caspase 6 apoptosis related cysteine protease; Caspase-6 subunit p11; Caspase-6 subunit p20; Mch2
Accession No.	Uniprot:P55212
Uniprot	P55212
Formulation	Rabbit IgG in phosphate buffered saline , pH 7.4, 150mM NaCl, 0.02% sodium azide and 50% glycerol.
Storage	Store at +4°C short term. Store at -20°C long term. Avoid freeze / thaw cycle.

## Application Details

WB 1:1000~1:2000 IP 1:50

## Images



Western blot analysis of Caspase-6 p18 expression in Jurkat cell treated with 1uM staurosporine lysate.

## Product Description

Caspase-6 is one of the major executioner caspases functioning in cellular apoptotic processes. Involved in the activation cascade of caspases responsible for apoptosis execution. Cleaves poly(ADP-ribose) polymerase in vitro, as well as lamins. Overexpression promotes programmed cell death.

## Background

---

Caspase-6 is one of the major executioner caspases functioning in cellular apoptotic processes. Involved in the activation cascade of caspases responsible for apoptosis execution. Cleaves poly(ADP-ribose) polymerase in vitro, as well as lamins. Overexpression promotes programmed cell death.

---

Note: This product is for in vitro research use only