

## EpCAM Rabbit mAb

Catalog No: #59021

Package Size: #59021-1 50ul #59021-2 100ul

Orders: order@signalwayantibody.com

Support: tech@signalwayantibody.com

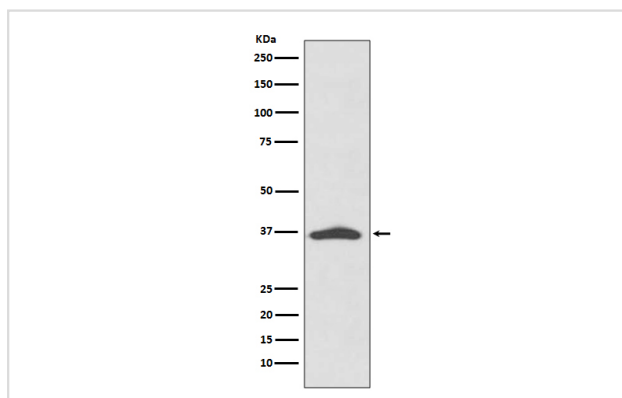
## Description

Product Name	EpCAM Rabbit mAb
Host Species	Rabbit
Clonality	Monoclonal
Isotype	Rabbit IgG
Purification	Affinity-chromatography
Applications	WB IHC
Species Reactivity	Human
Specificity	EpCAM Antibody detects endogenous levels of EpCAM
Immunogen Description	A synthesized peptide derived from human EpCAM
Other Names	Epithelial cell adhesion molecule; Ep-CAM; CO17A; CD326; Cell surface glycoprotein Trop-1; EGP; Epithelial glycoprotein 314; EGP314; hEGP314; KS 1/4 antigen; KSA;
Accession No.	Uniprot:P16422
Uniprot	P16422
Formulation	Rabbit IgG in phosphate buffered saline , pH 7.4, 150mM NaCl, 0.02% sodium azide and 50% glycerol.
Storage	Store at +4°C short term. Store at -20°C long term. Avoid freeze / thaw cycle.

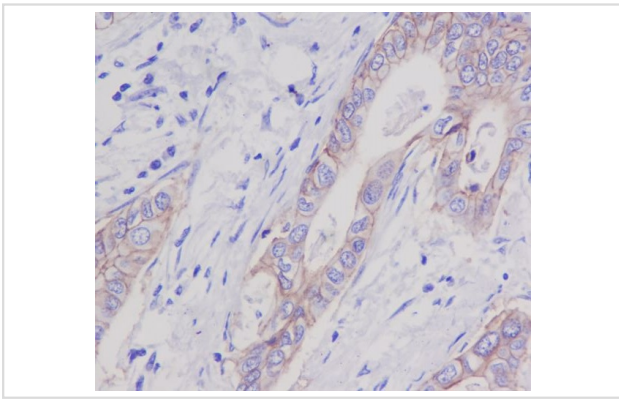
## Application Details

WB 1:1000~1:2000 IHC 1:50~1:200

## Images



Western blot analysis of EpCAM expression in A431 cell lysate.



Immunohistochemical analysis of paraffin-embedded human stomach carcinoma, using EpCAM Antibody.

## Product Description

Epithelial cell adhesion and activating molecule (EpCAM/CD326) is a transmembrane glycoprotein that mediates  $\text{Ca}^{2+}$  independent, homophilic adhesions on the basolateral surface of most epithelial cells. The antigen is being used as a target for immunotherapy treatment of human carcinomas.

## Background

Epithelial cell adhesion and activating molecule (EpCAM/CD326) is a transmembrane glycoprotein that mediates  $\text{Ca}^{2+}$  independent, homophilic adhesions on the basolateral surface of most epithelial cells. The antigen is being used as a target for immunotherapy treatment of human carcinomas.

Note: This product is for in vitro research use only