

## Cytokeratin 1 Rabbit mAb

Catalog No: #59022

Package Size: #59022-1 50ul #59022-2 100ul

Orders: order@signalwayantibody.com

Support: tech@signalwayantibody.com

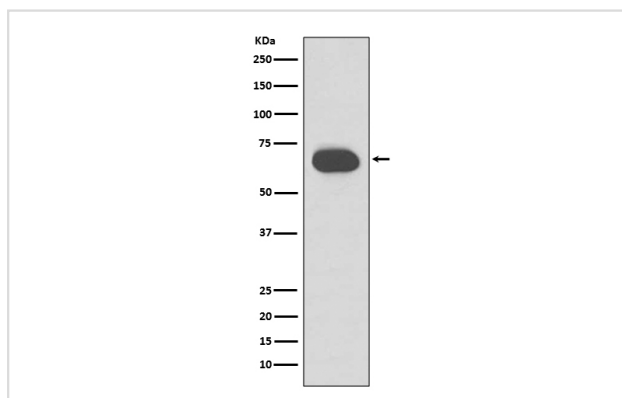
## Description

Product Name	Cytokeratin 1 Rabbit mAb
Host Species	Rabbit
Clonality	Monoclonal
Isotype	Rabbit IgG
Purification	Affinity-chromatography
Applications	WB IHC
Species Reactivity	Human Mouse Rat
Specificity	Cytokeratin 1 Antibody detects endogenous levels of Cytokeratin 1
Immunogen Description	A synthesized peptide derived from human Cytokeratin 1
Other Names	67 kDa cytokeratin; CK1; EHK; Epidermolytic hyperkeratosis 1; EPPK; Hair alpha protein; K1; Keratin; KRT 1; KRT1A; NEPPK; type II cytoskeletal 1; Type-II keratin Kb1;
Accession No.	Uniprot:P04264
Uniprot	P04264
Formulation	Rabbit IgG in phosphate buffered saline , pH 7.4, 150mM NaCl, 0.02% sodium azide and 50% glycerol.
Storage	Store at +4°C short term. Store at -20°C long term. Avoid freeze / thaw cycle.

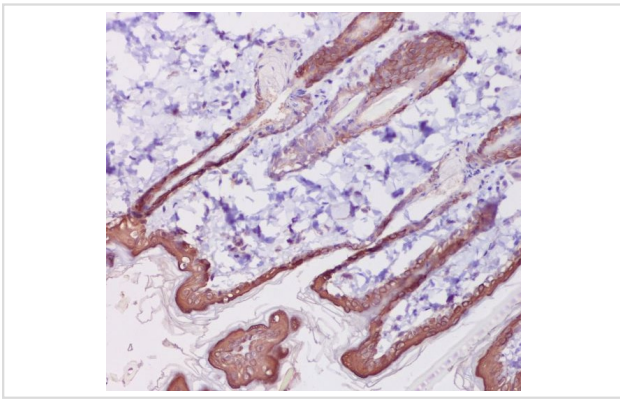
## Application Details

WB 1:5000~1:20000 IHC 1:50~1:200

## Images



Western blot analysis of Cytokeratin 1 expression in Human skin lysate.



Immunohistochemical analysis of paraffin-embedded rat skin, using Cytokeratin 1 Antibody.

## Product Description

May regulate the activity of kinases such as PKC and SRC via binding to integrin beta-1 (ITB1) and the receptor of activated protein C kinase 1 (RACK1).

## Background

May regulate the activity of kinases such as PKC and SRC via binding to integrin beta-1 (ITB1) and the receptor of activated protein C kinase 1 (RACK1).

Note: This product is for in vitro research use only