

## ATG5 Rabbit mAb

Catalog No: #59026

Package Size: #59026-1 50ul #59026-2 100ul

Orders: order@signalwayantibody.com

Support: tech@signalwayantibody.com

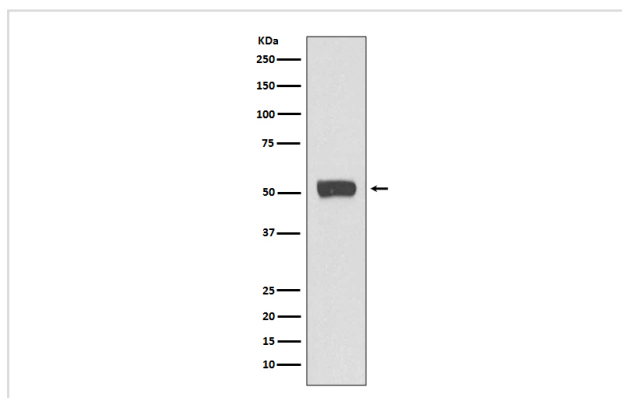
## Description

|                       |                                                                                                                                                                  |
|-----------------------|------------------------------------------------------------------------------------------------------------------------------------------------------------------|
| Product Name          | ATG5 Rabbit mAb                                                                                                                                                  |
| Host Species          | Rabbit                                                                                                                                                           |
| Clonality             | Monoclonal                                                                                                                                                       |
| Isotype               | Rabbit IgG                                                                                                                                                       |
| Purification          | Affinity-chromatography                                                                                                                                          |
| Applications          | WB IHC ICC/IF IP                                                                                                                                                 |
| Species Reactivity    | Human Mouse Rat                                                                                                                                                  |
| Specificity           | ATG5 Antibody detects endogenous levels of ATG5                                                                                                                  |
| Immunogen Description | A synthesized peptide derived from human ATG5                                                                                                                    |
| Other Names           | APG 5L; APG5; APG5 autophagy 5 like; APG5 like; APG5-like; Apoptosis specific protein; ASP; ATG 5; ATG5 autophagy related 5 homolog; Autophagy protein 5; hAPG5; |
| Accession No.         | Uniprot:Q9H1Y0                                                                                                                                                   |
| Uniprot               | Q9H1Y0                                                                                                                                                           |
| Formulation           | Rabbit IgG in phosphate buffered saline , pH 7.4, 150mM NaCl, 0.02% sodium azide and 50% glycerol.                                                               |
| Storage               | Store at +4°C short term. Store at -20°C long term. Avoid freeze / thaw cycle.                                                                                   |

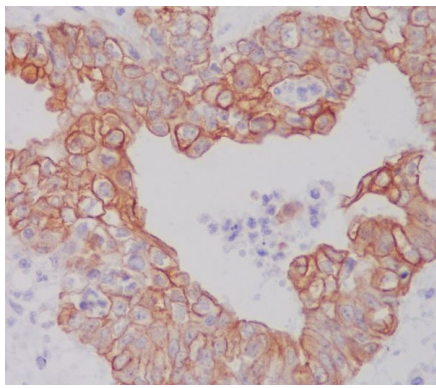
## Application Details

WB 1:1000~1:2000 IHC 1:50~1:200 ICC/IF 1:50~1:200 IP 1:50

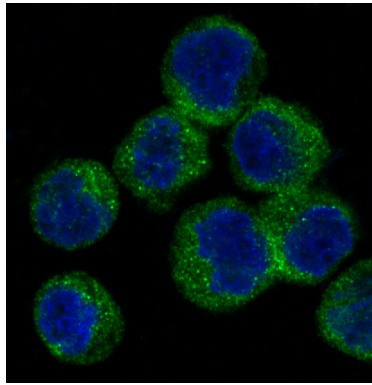
## Images



Western blot analysis of ATG5 expression in Raji cell lysate.



Immunohistochemical analysis of paraffin-embedded human ovarian cancer, using ATG5 Antibody.



Immunofluorescent analysis of Raji cells, using ATG5 Antibody.

## Product Description

Required for autophagy. Conjugates to ATG12 and associates with isolation membrane to form cup-shaped isolation membrane and autophagosome. Involved in mitochondrial quality control after oxidative damage, and in subsequent cellular longevity.

## Background

Required for autophagy. Conjugates to ATG12 and associates with isolation membrane to form cup-shaped isolation membrane and autophagosome. Involved in mitochondrial quality control after oxidative damage, and in subsequent cellular longevity.

Note: This product is for in vitro research use only