

## RelB Rabbit mAb

Catalog No: #59028

Package Size: #59028-1 50ul #59028-2 100ul

Orders: order@signalwayantibody.com

Support: tech@signalwayantibody.com

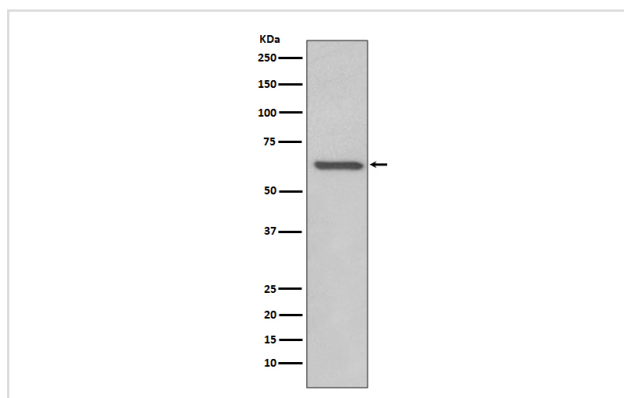
## Description

Product Name	RelB Rabbit mAb
Host Species	Rabbit
Clonality	Monoclonal
Isotype	Rabbit IgG
Purification	Affinity-chromatography
Applications	WB IHC ICC/IF IP
Species Reactivity	Human
Specificity	RelB Antibody detects endogenous levels of RelB
Immunogen Description	A synthesized peptide derived from human RelB
Other Names	I REL; I-Rel; IREL; Nuclear factor of kappa light polypeptide gene enhancer in B cells 3; relB; Reticuloendotheliosis viral oncogene homolog B;
Accession No.	Uniprot:Q01201
Uniprot	Q01201
Formulation	Rabbit IgG in phosphate buffered saline , pH 7.4, 150mM NaCl, 0.02% sodium azide and 50% glycerol.
Storage	Store at +4°C short term. Store at -20°C long term. Avoid freeze / thaw cycle.

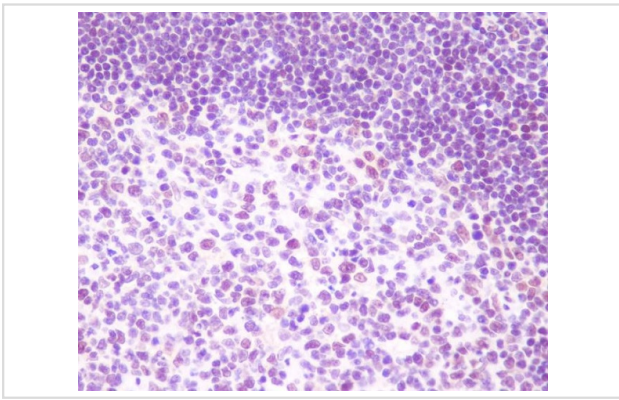
## Application Details

WB 1:500~1:1000 IHC 1:50~1:200 ICC 1:50~1:200 IP1:50

## Images



Western blot analysis of RelB expression in Raji cell lysate.



Immunohistochemical analysis of paraffin-embedded human tonsil, using RelB Antibody.

## Product Description

Transcription factors of the nuclear factor  $\kappa$ B (NF- $\kappa$ B)/Rel family play a pivotal role in inflammatory and immune responses. Involved in many biological processes such as inflammation, immunity, differentiation, cell growth, tumorigenesis and apoptosis.

## Background

Transcription factors of the nuclear factor  $\kappa$ B (NF- $\kappa$ B)/Rel family play a pivotal role in inflammatory and immune responses. Involved in many biological processes such as inflammation, immunity, differentiation, cell growth, tumorigenesis and apoptosis.

Note: This product is for in vitro research use only