

## Gli1 Rabbit mAb

Catalog No: #59029

Package Size: #59029-1 50ul #59029-2 100ul

Orders: order@signalwayantibody.com

Support: tech@signalwayantibody.com

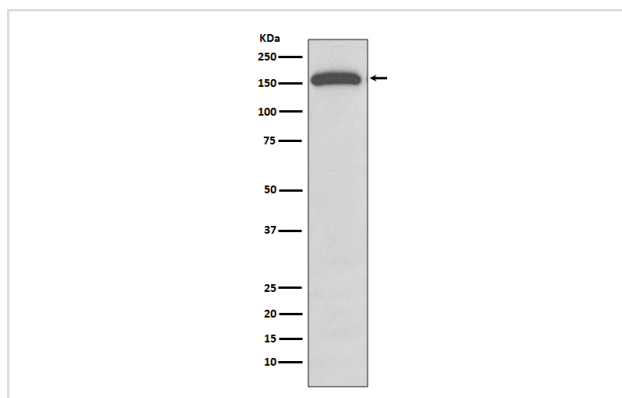
## Description

Product Name	Gli1 Rabbit mAb
Host Species	Rabbit
Clonality	Monoclonal
Isotype	Rabbit IgG
Purification	Affinity-chromatography
Applications	WB
Species Reactivity	Human
Specificity	Gli1 Antibody detects endogenous levels of Gli1
Immunogen Description	A synthesized peptide derived from human Gli1
Other Names	Zinc finger protein GLI1; Glioma-associated oncogene; Oncogene GLI; Zfp5; GLI family zinc finger 1;GLI;
Accession No.	Uniprot:P08151
Uniprot	P08151
Formulation	Rabbit IgG in phosphate buffered saline , pH 7.4, 150mM NaCl, 0.02% sodium azide and 50% glycerol.
Storage	Store at +4°C short term. Store at -20°C long term. Avoid freeze / thaw cycle.

## Application Details

WB 1:500~1:1000

## Images



Western blot analysis of Gli1 expression in A549 cell lysate.

## Product Description

GLI belongs to the Kruppel family of zinc finger proteins that includes three mammalian GLI proteins: GLI1, GLI2, and GLI3. Acts as a transcriptional activator. May regulate the transcription of specific genes during normal development. May play a role in craniofacial development and digital development, as well as development of the central nervous system and gastrointestinal tract. Mediates SHH signaling and thus cell proliferation and differentiation.

## Background

---

GLI belongs to the Kruppel family of zinc finger proteins that includes three mammalian GLI proteins: GLI1, GLI2, and GLI3. Acts as a transcriptional activator. May regulate the transcription of specific genes during normal development. May play a role in craniofacial development and digital development, as well as development of the central nervous system and gastrointestinal tract. Mediates SHH signaling and thus cell proliferation and differentiation.

---

Note: This product is for in vitro research use only