

Bcl10 Rabbit mAb

Catalog No: #59034

Package Size: #59034-1 50ul #59034-2 100ul

Orders: order@signalwayantibody.com

Support: tech@signalwayantibody.com

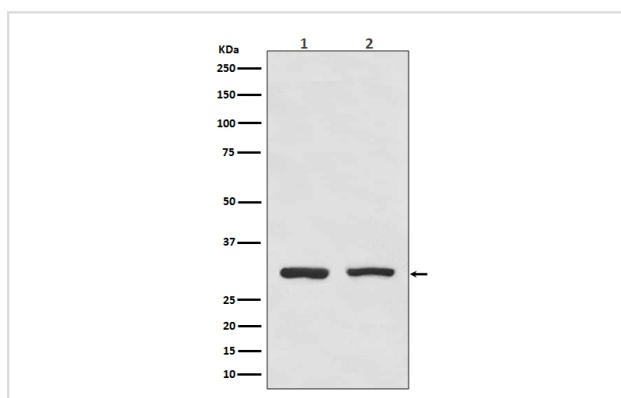
Description

Product Name	Bcl10 Rabbit mAb
Host Species	Rabbit
Clonality	Monoclonal
Isotype	Rabbit IgG
Purification	Affinity-chromatography
Applications	WB IHC ICC/IF IP
Species Reactivity	Human
Specificity	Bcl10 Antibody detects endogenous levels of Bcl10
Immunogen Description	A synthesized peptide derived from human Bcl10
Other Names	B cell CLL/lymphoma 10; B-cell leukemia/lymphoma 10; Bcl10; CARD containing molecule enhancing NF kappa B; CARD like apoptotic protein; Caspase recruiting domain containing protein; cE10; Cellular E10; CIPER; hCLAP; Mammalian CARD-containing adapter molecule E10; R-RCD1;
Accession No.	Uniprot:O95999
Uniprot	O95999
Calculated MW	31kDa
Formulation	Rabbit IgG in phosphate buffered saline , pH 7.4, 150mM NaCl, 0.02% sodium azide and 50% glycerol.
Storage	Store at +4°C short term. Store at -20°C long term. Avoid freeze / thaw cycle.

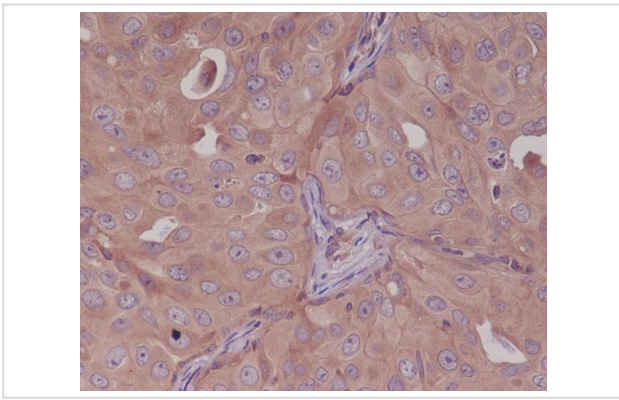
Application Details

WB 1:1000~1:2000 IHC 1:50~1:200 ICC/IF 1:50~1:200 IP 1:20

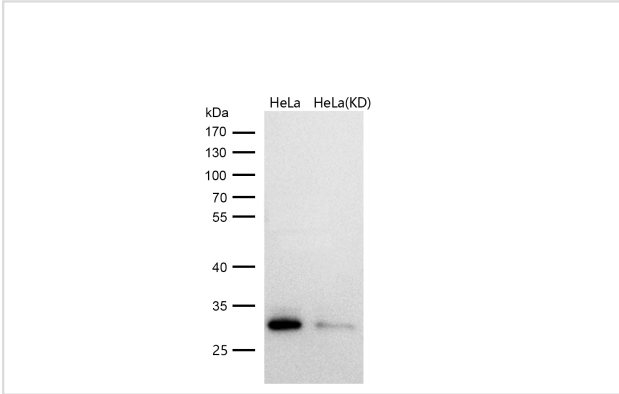
Images



Western blot analysis of Bcl10 expression in (1) HeLa cell lysate; (2) Raji cell lysate.



Immunohistochemical analysis of paraffin-embedded human breast cancer, using Bcl10 Antibody.



All lanes use the Antibody at 1:1K dilution for 1 hour at room temperature.

Product Description

Promotes apoptosis, pro-caspase-9 maturation and activation of NF-kappa-B via NIK and IKK. May be an adapter protein between upstream TNFR1-TRADD-RIP complex and the downstream NIK-IKK-IKAP complex. Is a substrate for MALT1.

Background

Promotes apoptosis, pro-caspase-9 maturation and activation of NF-kappa-B via NIK and IKK. May be an adapter protein between upstream TNFR1-TRADD-RIP complex and the downstream NIK-IKK-IKAP complex. Is a substrate for MALT1.

Note: This product is for in vitro research use only