

PSA/KLK3 Rabbit mAb

Catalog No: #59035

Package Size: #59035-1 50ul #59035-2 100ul

Orders: order@signalwayantibody.com

Support: tech@signalwayantibody.com

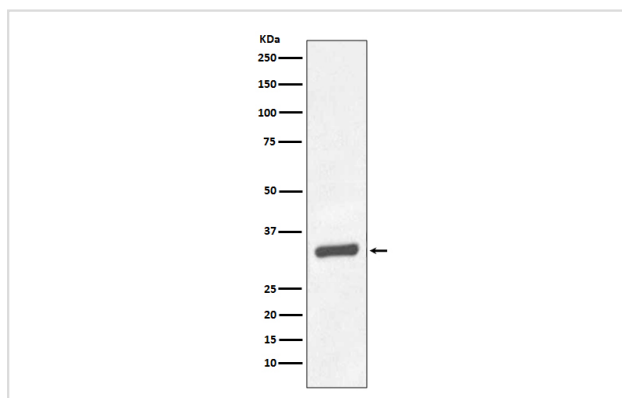
Description

Product Name	PSA/KLK3 Rabbit mAb
Host Species	Rabbit
Clonality	Monoclonal
Isotype	Rabbit IgG
Purification	Affinity-chromatography
Applications	WB IHC
Species Reactivity	Human
Specificity	PSA/KLK3 Antibody detects endogenous levels of PSA/KLK3
Immunogen Description	A synthesized peptide derived from human PSA/KLK3
Other Names	Prostate-specific antigen; PSA; Gamma-seminoprotein; Semin; Kallikrein-3; P-30 antigen; Semenogelase; KLK3; APS;
Accession No.	Uniprot:P07288
Uniprot	P07288
Formulation	Rabbit IgG in phosphate buffered saline , pH 7.4, 150mM NaCl, 0.02% sodium azide and 50% glycerol.
Storage	Store at +4°C short term. Store at -20°C long term. Avoid freeze / thaw cycle.

Application Details

WB 1:500~1:2000 IHC 1:50~1:200

Images



Western blot analysis of PSA/KLK3 expression in Human prostate carcinoma tissue lysate.

Product Description

PSA/KLK3 is a member of the glandular kallikrein subfamily of serine proteases. Upon cleavage of 7 amino-terminal amino acids, it is activated to liquefy semen in the seminal coagulum. Although PSA/KLK3 is produced in healthy individuals, investigators have found abnormally high levels in the blood of men with advanced prostate cancer.

Background

PSA/KLK3 is a member of the glandular kallikrein subfamily of serine proteases. Upon cleavage of 7 amino-terminal amino acids, it is activated to liquefy semen in the seminal coagulum. Although PSA/KLK3 is produced in healthy individuals, investigators have found abnormally high levels in the blood of men with advanced prostate cancer.

Note: This product is for in vitro research use only