

AP2M1 Rabbit mAb

Catalog No: #59036

Package Size: #59036-1 50ul #59036-2 100ul

Orders: order@signalwayantibody.com

Support: tech@signalwayantibody.com

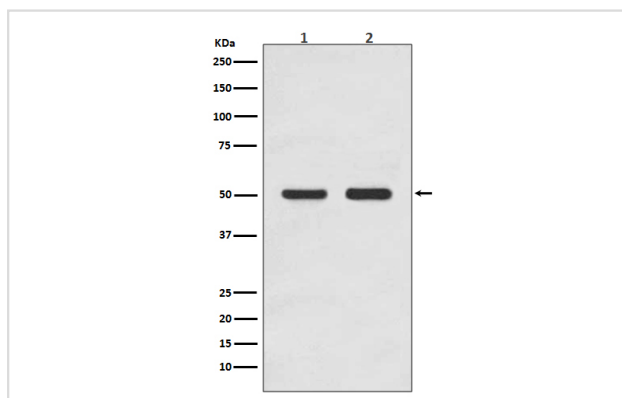
Description

Product Name	AP2M1 Rabbit mAb
Host Species	Rabbit
Clonality	Monoclonal
Isotype	Rabbit IgG
Purification	Affinity-chromatography
Applications	WB
Species Reactivity	Human Mouse Rat
Specificity	AP2M1 Antibody detects endogenous levels of AP2M1
Immunogen Description	A synthesized peptide derived from human AP2M1
Other Names	AP-2 complex subunit mu; AP-2 mu chain; Adapter-related protein complex 2 subunit mu; Adaptin-mu2; Clathrin assembly protein complex 2 mu medium chain; Clathrin coat assembly protein AP50;
Accession No.	Uniprot:Q96CW1
Uniprot	Q96CW1
Formulation	Rabbit IgG in phosphate buffered saline , pH 7.4, 150mM NaCl, 0.02% sodium azide and 50% glycerol.
Storage	Store at +4°C short term. Store at -20°C long term. Avoid freeze / thaw cycle.

Application Details

WB 1:1000~1:2000

Images



Western blot analysis of AP2M1 expression in (1) HEK293 cell lysate; (2) MCF-7 cell lysate.

Product Description

Adaptins are heterotetrameric subunits of adaptors, which are complexes involved in the formation of Clathrin-coated pits for vesicle-mediated endocytosis. Involved in clathrin-dependent endocytosis in which cargo proteins are incorporated into vesicles surrounded by clathrin (clathrin-coated vesicles, CCVs) which are destined for fusion with the early endosome.

Background

Adaptins are heterotetrameric subunits of adaptors, which are complexes involved in the formation of Clathrin-coated pits for vesicle-mediated endocytosis. Involved in clathrin-dependent endocytosis in which cargo proteins are incorporated into vesicles surrounded by clathrin (clathrin-coated vesicles, CCVs) which are destined for fusion with the early endosome.

Note: This product is for in vitro research use only